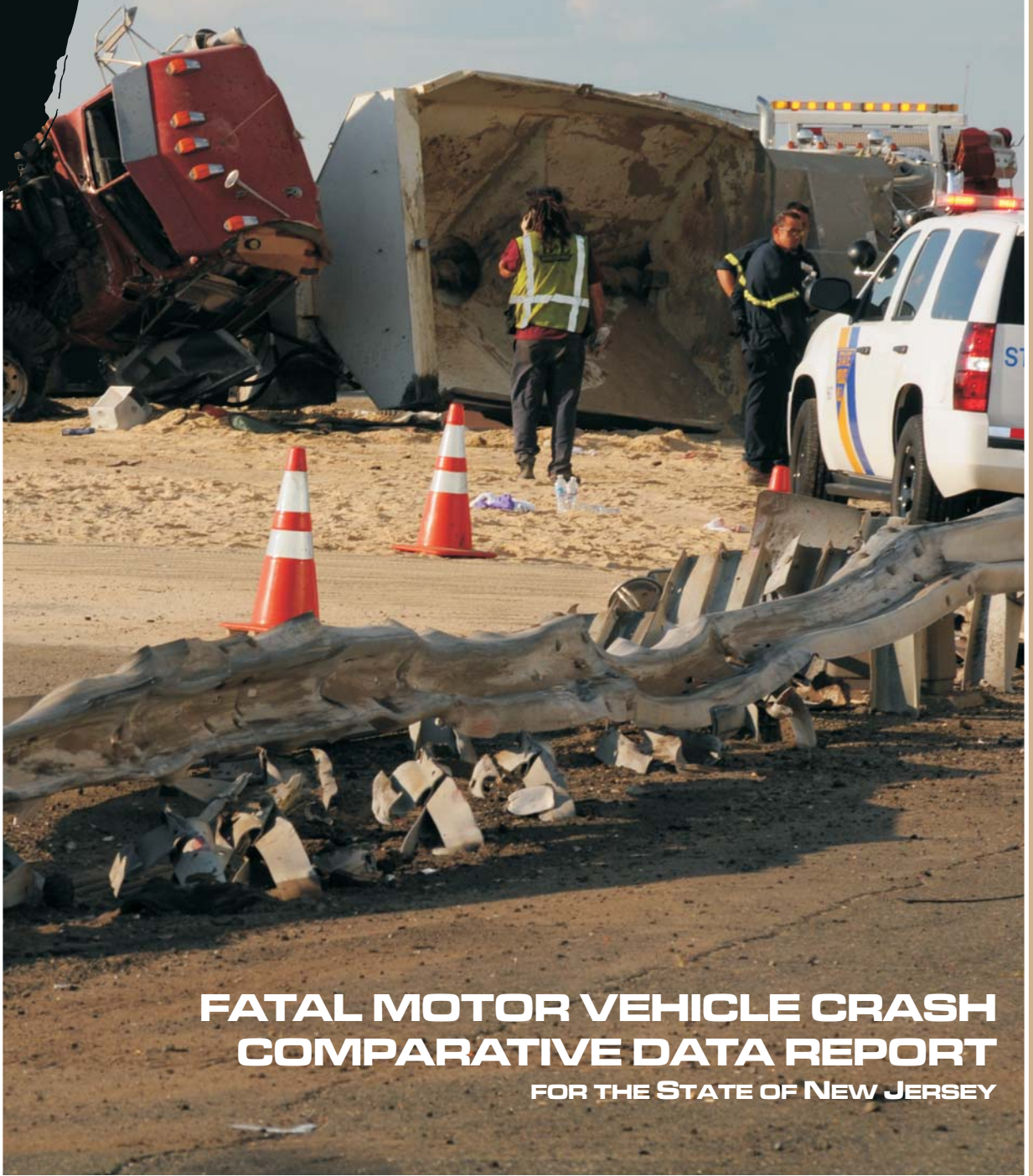


2012



**FATAL MOTOR VEHICLE CRASH  
COMPARATIVE DATA REPORT**

**FOR THE STATE OF NEW JERSEY**



COMPILED BY THE  
NEW JERSEY STATE POLICE  
FATAL ACCIDENT INVESTIGATION UNIT





## State of New Jersey

OFFICE OF THE ATTORNEY GENERAL  
DEPARTMENT OF LAW AND PUBLIC SAFETY  
DIVISION OF STATE POLICE  
POST OFFICE BOX 7068  
WEST TRENTON NJ 08628-0068  
(609) 882-2000

CHRIS CHRISTIE  
*Governor*

KIM GUADAGNO  
*Lt. Governor*

JOHN J. HOFFMAN  
*Acting Attorney General*

COLONEL JOSEPH R. FUENTES  
*Superintendent*

Dear Reader:

The year 2012 was another successful year for the State of New Jersey in the reduction of fatal motor vehicle crashes. In 2012, New Jersey recorded 553 fatal collisions that resulted in 589 deaths, an average of 1.61 fatalities per day. This is a decrease of 33 fatal collisions and 38 fatalities from 2011. The New Jersey State Police, as well as all law enforcement agencies and certain non-profit organizations, will remain committed in their respective traffic and public safety efforts. Through enforcement and education of the motoring public, we will continue to work towards the reduction of motor vehicle fatalities on our roadways.

As traffic-related deaths continue to be the leading cause of death in New Jersey and the nation, we must continue our efforts in traffic safety awareness. In 2012, the recorded nationwide death toll on our roadways was approximately 34,080 fatalities. This is an approximate increase of 5.3% from 2011. Despite the nationwide increase in fatalities in 2012, it is approximately 7,179 fewer deaths that were recorded five years ago in 2007.

On the following pages you will find statistics concerning this past calendar year's fatal motor vehicle crashes. The information was compiled by the Fatal Accident Investigation Unit within the Division of State Police. This report constitutes a detailed look at the causes and results of fatal crashes throughout the State during 2012. With the continued efforts and cooperation of the public, and federal, state and local agencies, I am convinced that our traffic safety records will continue to improve in the years ahead.

Sincerely,

Joseph R. Fuentes  
Colonel  
Superintendent



*"An Internationally Accredited Agency"*

*New Jersey Is An Equal Opportunity Employer  
Printed on Recycled Paper and Recyclable*



# TABLE OF CONTENTS

## STATISTICAL SUMMARY

2012 Quick Facts . . . . .	1
2012 Motor Vehicle Fatal Crashes and Fatalities with a Comparison of the 1993-2012 Crashes and Fatalities . . . . .	2
Crash Victim Classification by Month . . . . .	3
Crashes and Fatalities by Month of Occurrence . . . . .	3
Crash Victim Classification by County . . . . .	4
Crashes by County of Occurrence and Roadway Classification . . . . .	5
Fatalities and Injuries According to Crash Type Classification . . . . .	6
Hours of Occurrence . . . . .	7
Weather Conditions . . . . .	7
Day of Occurrence . . . . .	8
Age of Driver Victims . . . . .	8
Age of Pedestrian Victims . . . . .	8
Sex of Pedestrians . . . . .	9
Condition of All Drivers . . . . .	9
Alcohol Factor . . . . .	10
Victim Alcohol Factor, 2008-2012 Comparison . . . . .	11
Victim Alcohol Factors for the Year 2012 . . . . .	11
Alcohol Involvement of Deceased Drivers Related to Manner of Collision . . . . .	12
Manner of Collision . . . . .	12
Type of Vehicles Involved (Including Parked) . . . . .	13
Character of Road . . . . .	14
Road Designation . . . . .	14
Age of Drivers . . . . .	15
Sex of Drivers . . . . .	15
What Drivers Were Doing . . . . .	16
What Pedestrians Were Doing . . . . .	16
Contributing Circumstances . . . . .	17

## SPECIFIC AREAS OF CONCERN . . . . . 18

Interstate Highway Fatalities . . . . .	19
Pedalcycle Crashes . . . . .	20
Motorcycle Crashes . . . . .	21
Tractor-Trailer Crashes . . . . .	22
Restraint Usage . . . . .	23
17 - 20 Age Group . . . . .	24
Fatal Crashes and Persons Killed for Selected Holiday Periods . . . . .	25
Ten Year Experience . . . . .	26
Fatal Crash Investigation Summary by Troop . . . . .	27
Fatal Crashes by County, Municipality, Date, Time and Location . . . . .	30
Map - Fatalities by County . . . . .	39

# QUICK FACTS

- Nationwide, the fatality rate increased to 1.16 fatalities per hundred million vehicle miles traveled, up from 1.1 in 2011.
- Nationwide preliminary statistics indicate there were 34,080 people killed.
- In New Jersey, there were 553 fatal crashes with 589 people killed.
- There was a decrease of 33 fatal crashes and a decrease of 38 fatalities.
- Of the fatalities, 28.7 % had consumed alcohol to some extent.
- Of all drivers, 12.9 % were legally intoxicated.
- An average of 1.61 persons were killed every day.
- There were 76 fatal crashes involving 81 motorcycles.
- Pedalcyclists accounted for 14 fatal crashes.
- The pedestrian death toll was 163.
- There were a total of 30 hit and run fatal crashes involving 48 vehicles. The victims were comprised of 2 drivers, 3 passengers, 26 pedestrians and 2 pedalcyclists.
- Of the 823 drivers listed, 32 New Jersey drivers and 6 out-of-state drivers were suspended. There were 5 drivers without valid licenses.
- There are 39,213 miles of public open roads in the state of New Jersey, indicating one death for every 66.6 miles.
- Straight roads were involved in 58.4 % of all fatal crashes.
- Of all fatal crashes, 81.4 % occurred during clear weather conditions.
- Of the known drivers involved in fatal crashes, 73.9 % were males.
- Of the vehicles involved in fatal crashes, 49.5 % involved passenger cars.
- There were 29 tractor-trailers involved in 28 fatal crashes which resulted in 32 fatalities.

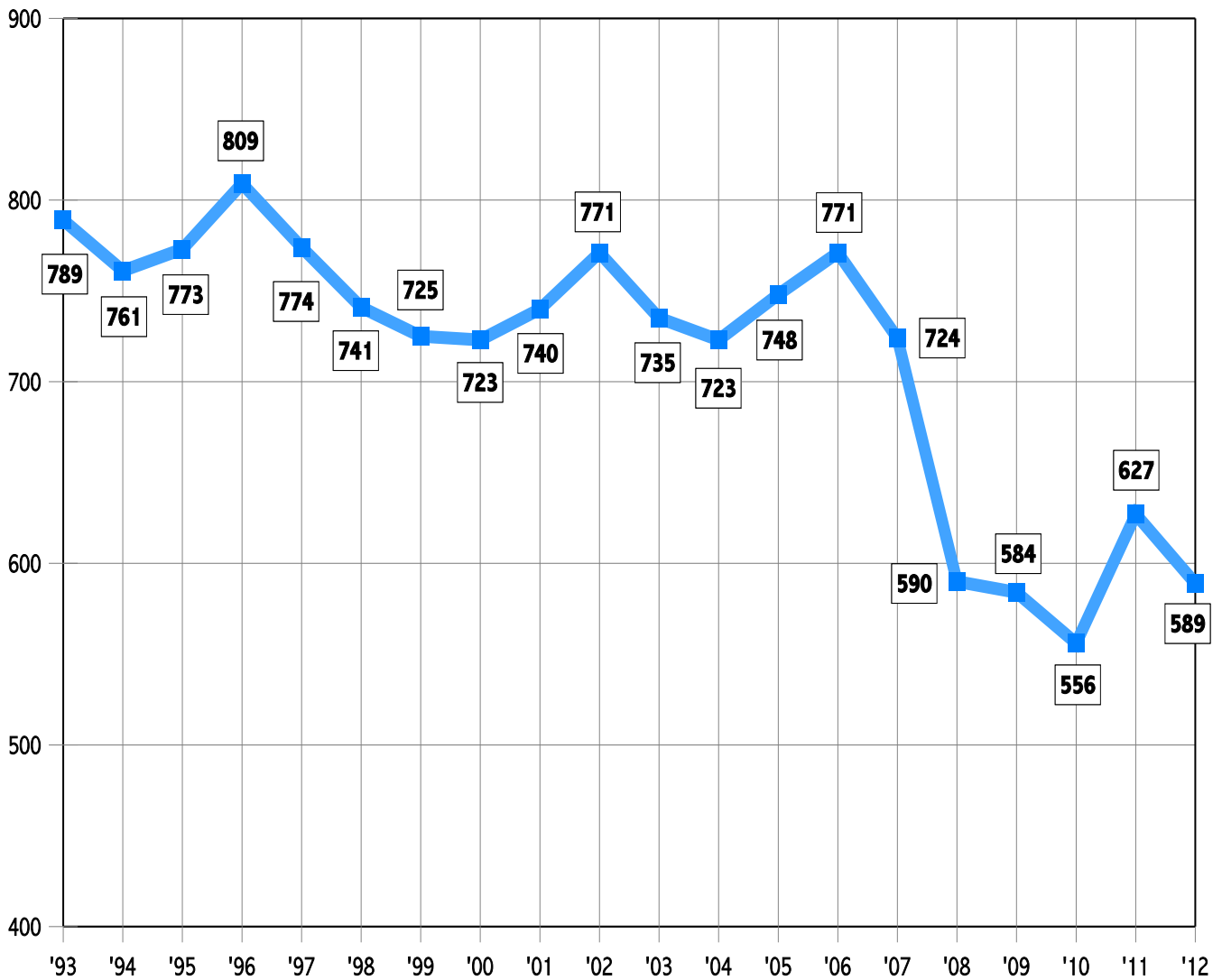
# SUBJECT

Statistical Summary of 2012 Motor Vehicle Fatal Crashes and Fatalities with a Comparison of the 2008-2012 Crashes and Fatalities.

Statistics	2008	2009	2010	2011	2012
Fatal Crashes	555	550	530	586	553
Fatalities	590	584	556	627	589

## TREND IN FATALITIES

20 Year Trend



## VICTIM CLASSIFICATION BY MONTH - 2012

Month	Driver	Passenger	Pedalcyclist	Pedestrian	Totals
January	26	9	1	16	52
February	15	11	3	11	40
March	25	7	1	12	45
April	29	5	1	9	44
May	28	6	1	9	44
June	31	9	2	6	48
July	26	12	1	19	58
August	18	8	1	17	44
September	28	9	1	16	54
October	31	12	1	10	54
November	31	9	1	15	56
December	21	6	0	23	50
<b>Totals</b>	<b>309</b>	<b>103</b>	<b>14</b>	<b>163</b>	<b>589</b>

## CRASHES AND FATALITIES BY MONTH OF OCCURRENCE

Month	Crashes					Fatalities				
	2008	2009	2010	2011	2012	2008	2009	2010	2011	2012
January	55	55	34	36	49	59	57	37	36	52
February	38	44	27	38	37	40	45	28	45	40
March	33	33	43	44	43	33	35	45	47	45
April	46	44	53	51	43	50	48	55	57	44
May	45	41	39	53	41	46	43	40	57	44
June	48	48	48	48	47	51	51	52	49	48
July	51	56	56	55	55	55	56	61	60	58
August	50	50	40	41	42	52	57	42	47	44
September	41	48	53	47	50	46	52	56	50	54
October	54	42	49	63	48	60	42	50	66	54
November	49	45	38	52	52	52	49	39	53	56
December	45	44	50	58	46	46	49	51	60	50
<b>TOTAL</b>	<b>555</b>	<b>550</b>	<b>530</b>	<b>586</b>	<b>553</b>	<b>590</b>	<b>584</b>	<b>556</b>	<b>627</b>	<b>589</b>

## CRASH VICTIM CLASSIFICATION BY COUNTY

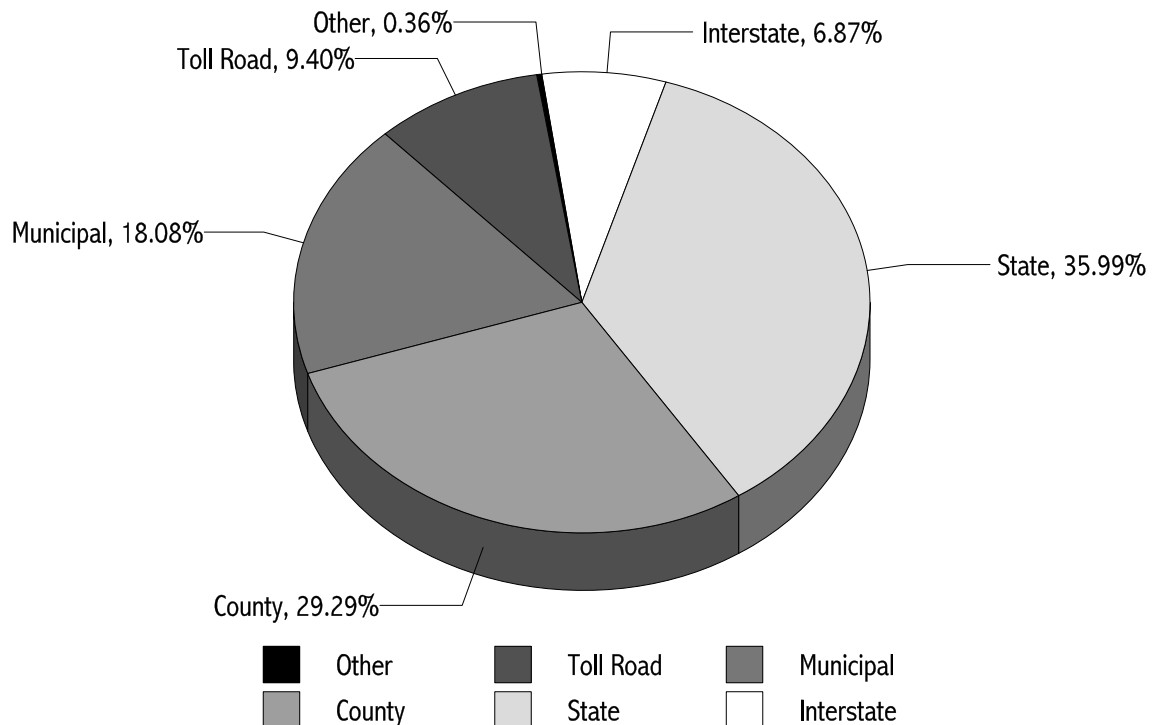
County	Victim Classification					
	Crashes	Killed	Driver	Passenger	Pedestrian	Pedalcyclist
Atlantic	31	32	16	8	7	1
Bergen	31	33	17	6	10	0
Burlington	47	53	28	14	11	0
Camden	25	26	15	4	6	1
Cape May	10	11	5	1	5	0
Cumberland	17	18	9	2	6	1
Essex	40	41	9	8	22	2
Gloucester	22	23	15	4	4	0
Hudson	23	25	12	3	9	1
Hunterdon	5	6	2	2	1	1
Mercer	23	23	11	0	11	1
Middlesex	60	65	32	13	19	1
Monmouth	34	36	23	3	10	0
Morris	27	30	18	8	4	0
Ocean	50	53	33	6	10	4
Passaic	30	31	16	5	10	0
Salem	8	9	7	1	1	0
Somerset	16	18	9	5	4	0
Sussex	14	15	11	2	2	0
Union	28	28	13	4	10	1
Warren	12	13	8	4	1	0
<b>TOTAL</b>	<b>553</b>	<b>589</b>	<b>309</b>	<b>103</b>	<b>163</b>	<b>14</b>

## CRASHES BY COUNTY OF OCCURRENCE AND ROADWAY CLASSIFICATION

County	Interstate	State	County	Municipal	Toll Roads	Other	TOTALS
Atlantic	0	16	9	6	0	0	31
Bergen	3	11	7	4	6	0	31
Burlington	4	18	16	4	4	1	47
Camden	3	9	7	2	4	0	25
Cape May	0	5	3	1	1	0	10
Cumberland	0	8	6	3	0	0	17
Essex	3	4	16	14	3	0	40
Gloucester	1	8	8	4	1	0	22
Hudson	1	7	5	5	5	0	23
Hunterdon	2	1	2	0	0	0	5
Mercer	3	10	3	5	2	0	23
Middlesex	0	25	15	8	12	0	60
Monmouth	0	15	13	2	4	0	34
Morris	6	10	6	5	0	0	27
Ocean	0	12	25	5	7	1	50
Passaic	5	10	7	7	1	0	30
Salem	0	2	3	3	0	0	8
Somerset	3	6	4	3	0	0	16
Sussex	0	9	3	2	0	0	14
Union	2	7	2	15	2	0	28
Warren	2	6	2	2	0	0	12
<b>TOTAL</b>	<b>38</b>	<b>199</b>	<b>162</b>	<b>100</b>	<b>52</b>	<b>2</b>	<b>553</b>

NOTE: US roadways are included in the State Highway column. Other roadways include State, County and Municipal Parks and Institutions and US Government Property.

### Breakdown in Percentages of 553 Crashes during 2012





## FATALITIES AND INJURIES ACCORDING TO CRASH TYPE CLASSIFICATION

Type	Total Crashes					Total Fatalities					Total Injured				
	2008	2009	2010	2011	2012	2008	2009	2010	2011	2012	2008	2009	2010	2011	2012
Pedestrian	136	157	141	140	155	138	160	141	140	158	26	32	19	24	26
Other Motor Vehicle	180	185	182	210	182	196	210	192	230	199	279	231	222	333	253
Railroad Train	0	3	1	3	0	0	3	1	3	0	0	0	0	2	0
Parked Vehicle	12	12	8	11	14	16	12	8	12	15	9	1	4	6	12
Pedalcycle	19	13	13	17	14	20	13	13	17	14	1	3	4	4	0
Animal	0	0	1	0	1	0	0	1	0	1	0	0	0	0	0
Fixed/Other Object	172	151	148	165	152	183	156	162	182	163	74	59	96	126	75
Non-Collision	28	25	30	34	28	29	26	32	37	31	24	26	19	21	14
Other	8	4	6	6	7	8	4	6	6	8	1	0	2	1	2
<b>TOTAL</b>	<b>555</b>	<b>550</b>	<b>530</b>	<b>586</b>	<b>553</b>	<b>590</b>	<b>584</b>	<b>556</b>	<b>627</b>	<b>589</b>	<b>414</b>	<b>352</b>	<b>366</b>	<b>517</b>	<b>382</b>

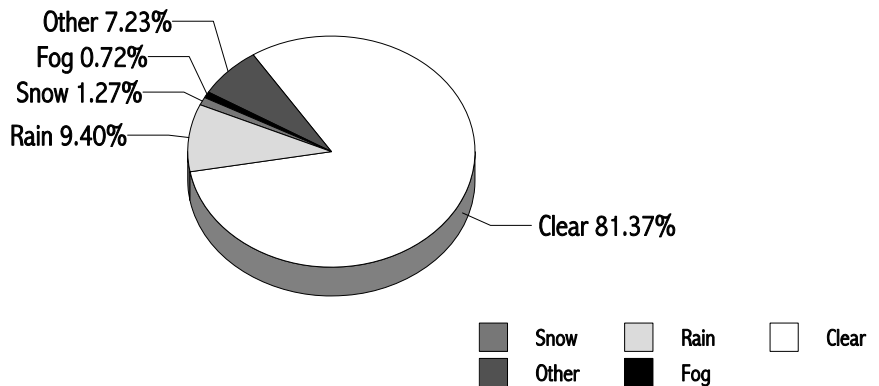
In 2012 there were 553 fatal crashes in which 589 persons were killed and 382 persons injured.

## HOURS OF OCCURRENCE

Time Of Occurrence	2008	2009	2010	2011	2012
12:00 to 12:59 a.m.	32	21	28	18	18
1:00 to 1:59 a.m.	20	17	24	31	22
2:00 to 2:59 a.m.	29	30	19	31	20
3:00 to 3:59 a.m.	18	16	18	22	20
4:00 to 4:59 a.m.	23	12	12	14	12
5:00 to 5:59 a.m.	13	23	19	16	18
6:00 to 6:59 a.m.	11	25	19	17	24
7:00 to 7:59 a.m.	14	13	19	13	17
8:00 to 8:59 a.m.	13	10	13	19	13
9:00 to 9:59 a.m.	18	23	16	20	14
10:00 to 10:59 a.m.	25	29	20	22	20
11:00 to 11:59 a.m.	10	15	16	27	18
12:00 to 12:59 p.m.	23	21	28	23	14
1:00 to 1:59 p.m.	18	23	19	28	23
2:00 to 2:59 p.m.	25	23	24	22	26
3:00 to 3:59 p.m.	29	28	33	25	24
4:00 to 4:59 p.m.	26	28	28	30	31
5:00 to 5:59 p.m.	34	31	25	27	38
6:00 to 6:59 p.m.	32	29	22	39	32
7:00 to 7:59 p.m.	31	29	27	26	34
8:00 to 8:59 p.m.	28	27	28	30	31
9:00 to 9:59 p.m.	25	29	21	28	33
10:00 to 10:59 p.m.	34	25	20	28	19
11:00 to 11:59 p.m.	24	23	32	30	32
<b>TOTAL</b>	<b>555</b>	<b>550</b>	<b>530</b>	<b>586</b>	<b>553</b>

## WEATHER CONDITIONS

Clear	450
Rain	52
Snow	7
Fog	4
Other	40
<b>Total</b>	<b>553</b>



## DAY OF OCCURRENCE

Day of Occurrence	2008	2009	2010	2011	2012
Sunday	75	71	96	101	83
Monday	76	74	66	79	75
Tuesday	66	68	63	87	68
Wednesday	66	67	55	62	86
Thursday	72	72	66	75	63
Friday	90	95	98	78	89
Saturday	110	103	86	104	89
<b>TOTAL</b>	<b>555</b>	<b>550</b>	<b>530</b>	<b>586</b>	<b>553</b>

## AGE OF DRIVER VICTIMS

Age Of Driver	Number Killed				
	2008	2009	2010	2011	2012
16 and under	4	1	2	2	1
Age 17	4	6	4	4	2
18 - 20	30	29	13	24	21
21 - 24	37	24	32	46	42
25 - 29	32	34	40	43	35
30 - 39	54	41	39	52	45
40 - 49	52	54	49	57	36
50 - 64	50	54	56	70	70
65 and older	57	72	68	64	57
<b>TOTAL</b>	<b>320</b>	<b>315</b>	<b>303</b>	<b>362</b>	<b>309</b>

## AGE OF PEDESTRIAN VICTIMS

Age Of Pedestrian	Number Killed				
	2008	2009	2010	2011	2012
0 - 4	2	2	3	1	1
5 - 9	1	2	1	2	2
10 - 14	4	0	1	4	3
15 - 19	8	8	6	3	7
20 - 24	12	12	10	7	12
25 - 44	41	44	49	41	42
45 - 64	39	61	26	54	54
65 - 74	17	10	23	12	21
75 and older	14	18	21	19	20
Unknown	0	0	1	0	1
<b>TOTAL</b>	<b>138</b>	<b>157</b>	<b>141</b>	<b>143</b>	<b>163</b>

## SEX OF PEDESTRIANS

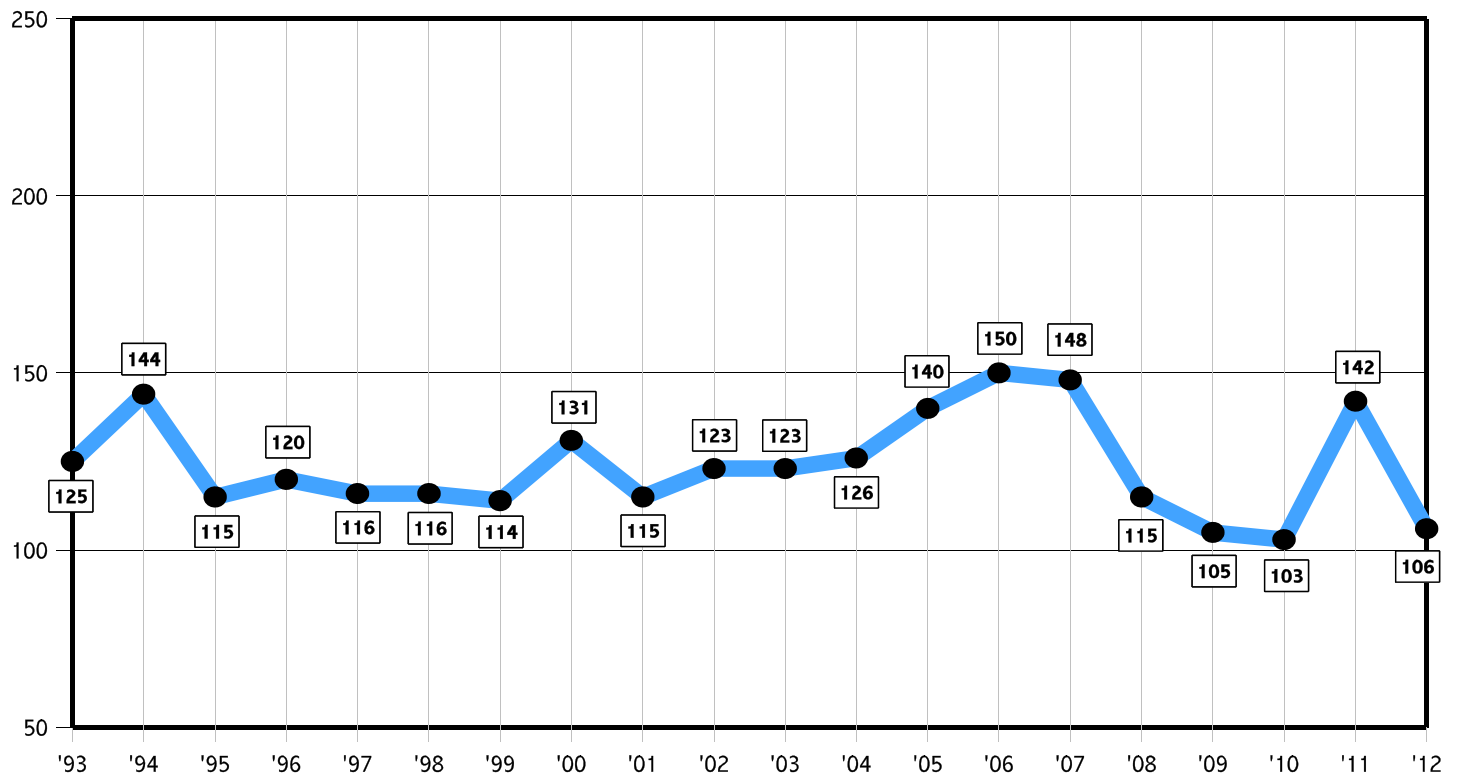
Sex	2008	2009	2010	2011	2012
Male	92	112	94	93	117
Female	46	45	47	50	46
<b>TOTAL</b>	<b>138</b>	<b>157</b>	<b>141</b>	<b>143</b>	<b>163</b>

## CONDITION OF ALL DRIVERS

Condition	Drivers
Unknown	21
Apparently Normal	594
Alcohol Use	97
Drug Use (Illicit)	51
Medication	13
Alcohol & Drug/Medication Use	38
Physical Handicaps	0
Illness	5
Fatigue	1
Fell Asleep	3
Other	0
<b>TOTAL</b>	<b>823</b>

# 20 YEAR TREND

Intoxicated Drivers Involved in Fatal Crashes



## ALCOHOL FACTOR

There were 589 fatalities during 2012. Of the fatalities, 309 were drivers, 103 were passengers, 163 were pedestrians and 14 were pedalcyclists. Of this total, 488 were tested for alcohol and 101 were not tested. Of the 488 tested, 169 were positive for alcohol in varying degrees and 319 were negative. This indicates that 34.6 % of the fatalities tested were positive for alcohol and 65.4 % were negative. Seventy-Four drivers, 14 passengers, 28 pedestrians and 1 pedalcyclist tested positive for drugs.

In 145 of the 553 crashes, Driving While Intoxicated (alcohol and/or drugs) was listed as the major contributing factor. There were 158 people killed as a result of these 145 crashes.

### 1.) DRIVERS:

**Deceased:** There were a total of 309 drivers killed of which 271 were tested for alcohol. Of those tested, 98 were positive and 173 were negative, indicating 36.2 % had consumed an alcoholic beverage. Of the 98 imbibing drivers, 77 or 78.6 % had an alcohol level of .08 % or higher.

**Surviving:** There were a total of 514 surviving drivers of which 182 were tested for alcohol. Of those tested, 41 were positive and 141 were negative, indicating 22.5 % had consumed an alcoholic beverage. Of the 41 imbibing drivers, 29 or 70.7 % had an alcohol level of .08 % or higher.

2.) **Passengers:** There were a total of 103 passengers killed of which 66 were tested for alcohol. Of those tested, 25 were positive and 41 were negative, indicating 37.9 % had consumed an alcoholic beverage.

3.) **Pedestrians:** There were a total of 163 pedestrians killed of which 140 were tested for alcohol. Of those tested, 45 were positive and 95 were negative, indicating 32.1 % had consumed an alcoholic beverage.

4.) **Pedalcyclists:** There were a total of 14 pedalcyclists killed of which 11 were tested for alcohol. Of those tested, 1 was positive and 10 were negative, indicating 9.1 % had consumed an alcoholic beverage.

### SURVIVING DRIVER ALCOHOL FACTORS

	.01% - .03%	.04% - .07%	.08% - .10%	.11% & over	Negative	No test	Total
<b>Drivers</b>	3	9	3	26	141	332	<b>514</b>

### EVALUATION:

2012 showed a 13.3 % decrease in alcohol-related fatalities. The number of fatal accident victims with blood alcohol readings above the legal limit decreased from 158 in 2011 to 136 in 2012, a decrease of 13.9 %. Deceased drivers with alcohol involvement showed a 19.0 % decrease when compared to 2011.

### ALCOHOL & DRUG USE:

8 surviving drivers, 32 deceased drivers, 6 passengers, 14 pedestrians and 0 pedalcyclists tested positive for alcohol and drugs (Illicit & Medication).

16 surviving drivers, 42 deceased drivers, 8 passengers, 14 pedestrians and 0 pedalcyclists tested positive for drugs (Illicit & Medication) alone.

**VICTIM ALCOHOL FACTOR 2008 - 2012 COMPARISON**

	.01 % - .03 %					.04 % - .07 %					.08 % - .10 %									
	2008	2009	2010	2011	2012	2008	2009	2010	2011	2012	2008	2009	2010	2011	2012					
<b>Drivers</b>	18	17	14	8	14	10	3	3	9	7	5	11	12	13	9					
<b>Passengers</b>	2	2	6	5	1	4	5	8	3	3	2	1	3	2	1					
<b>Pedestrians</b>	0	4	3	8	7	2	5	1	3	1	1	3	1	3	2					
<b>Pedalcyclists</b>	0	0	0	0	0	0	0	2	1	0	0	0	1	0	0					
<b>TOTAL</b>	<b>20</b>	<b>23</b>	<b>23</b>	<b>21</b>	<b>22</b>	<b>16</b>	<b>13</b>	<b>14</b>	<b>16</b>	<b>11</b>	<b>8</b>	<b>15</b>	<b>17</b>	<b>18</b>	<b>12</b>					
	.11 % and Over					Negative					No Test					TOTAL				
	2008	2009	2010	2011	2012	2008	2009	2010	2011	2012	2008	2009	2010	2011	2012	2008	2009	2010	2011	2012
<b>Drivers</b>	80	64	65	91	68	174	171	170	205	173	33	49	39	36	38	320	315	303	362	309
<b>Passengers</b>	18	8	16	9	20	46	40	33	47	41	40	42	33	39	37	112	98	99	105	103
<b>Pedestrians</b>	42	40	35	37	35	66	84	84	80	95	27	21	17	12	23	138	157	141	143	163
<b>Pedalcyclists</b>	3	0	0	3	1	11	11	10	9	10	6	3	0	4	3	20	14	13	17	14
<b>TOTAL</b>	<b>143</b>	<b>112</b>	<b>116</b>	<b>140</b>	<b>124</b>	<b>297</b>	<b>306</b>	<b>297</b>	<b>341</b>	<b>319</b>	<b>106</b>	<b>115</b>	<b>89</b>	<b>91</b>	<b>101</b>	<b>590</b>	<b>584</b>	<b>556</b>	<b>627</b>	<b>589</b>

There were 117 victims that tested positive for drugs.

**VICTIM ALCOHOL FACTORS FOR THE YEAR 2012**

	.01% - .03%	.04% - .07%	.08% - .10%	.11% & over	Negative	No Test	TOTAL
<b>Drivers</b>	14	7	9	68	173	38	<b>309</b>
<b>Passengers</b>	1	3	1	20	41	37	<b>103</b>
<b>Pedestrians</b>	7	1	2	35	95	23	<b>163</b>
<b>Pedalcyclists</b>	0	0	0	1	10	3	<b>14</b>
<b>TOTAL</b>	<b>22</b>	<b>11</b>	<b>12</b>	<b>124</b>	<b>319</b>	<b>101</b>	<b>589</b>

**LEGEND** NEGATIVE: Tested and found to be negative.

NO TEST: Because of delayed death, age factor, contamination of samples, and the failure on the part of some investigative agencies and medical examiners to cause a test to be performed on victims.

NOTE: 74 drivers, 14 passengers, 28 pedestrians and 1 pedalcyclist tested positive for drugs.

## ALCOHOL INVOLVEMENT OF DECEASED DRIVERS RELATED TO MANNER OF COLLISION

Manner of Collision	.01 - .07 %	.08 % and above	Alcohol & Drugs	Drugs Alone
Angle	1	2	1	5
Same Direction - Rear End	2	5	4	3
Opposite Direction - Head On/Angular	3	7	4	7
Opposite Direction - Left/U-Turn	2	3	2	3
Fixed Object	8	48	16	19
Pedestrian	0	0	0	0
Railroad Train	0	0	0	0
Pedalcycle	0	0	0	0
Struck Parked Vehicle	3	2	2	0
Overtuned	1	8	3	2
Other Object	0	0	0	0
Sideswipe	1	2	0	3
Encroachment	0	0	0	0
Animal	0	0	0	0
Backing	0	0	0	0
<b>TOTAL</b>	<b>21</b>	<b>77</b>	<b>32</b>	<b>42</b>

NOTE: Drivers that test positive for both alcohol and drug use are counted in both the appropriate BAC column and in the Alcohol / Drugs column.

## MANNER OF COLLISION

Manner of Collision - All Crashes	2008	2009	2010	2011	2012
Angle	61	51	56	59	56
Same Direction - Rear End	25	26	33	47	33
Opposite Direction - Head On/Angular	54	63	55	58	56
Opposite Direction - Left/U-Turn	21	23	19	28	22
Fixed Object	171	149	148	162	151
Pedestrian	136	157	141	140	155
Other*	40	34	30	40	37
Sideswipe	19	22	18	18	15
Overtuned	28	25	30	34	28
<b>TOTAL</b>	<b>555</b>	<b>550</b>	<b>530</b>	<b>586</b>	<b>553</b>

\* Other categories include - Struck Parked Vehicle, Backing, Encroachment, Animal, Pedalcycle, Other Object and Railroad Train.

## TYPE OF VEHICLES INVOLVED (Including Parked)

	Fatal Crashes				
	2008	2009	2010	2011	2012
Passenger Vehicle	438	472	429	493	433
Recreation Vehicle	0	0	0	0	0
Taxicab / Limo	4	6	6	11	6
Motorcycle	88	69	74	97	81
Moped	1	0	0	0	0
Pickup	67	65	59	58	69
Sport Utility Vehicle	144	125	150	154	149
Van	6	10	8	5	9
Fire / Rescue	0	2	0	1	0
Police Vehicle	7	1	3	4	1
Ambulance	0	0	2	1	2
Bus	4	13	10	7	9
School Bus	4	1	2	2	4
Single Unit 2-Axle	19	21	19	19	15
Single Unit 3-Axle	11	10	6	14	17
Truck / Trailer	3	3	5	2	4
Truck (Bobtail)	0	1	3	1	2
Semi-Trailer (Tractor-Trailer)	28	41	29	30	29
Doubles	2	0	2	1	0
Triples	0	0	0	0	0
Heavy Truck	1	0	1	3	0
Other	46	40	42	48	44
<b>TOTAL</b>	<b>873</b>	<b>880</b>	<b>850</b>	<b>951</b>	<b>874</b>



## CHARACTER OF ROAD

Road Character	Fatal Crashes				
	2008	2009	2010	2011	2012
Straight and Level	256	247	258	281	269
Straight and Grade	47	47	58	57	45
Straight at Hillcrest	9	8	3	9	9
Curve and Level	87	84	61	74	55
Curve and Grade	50	51	44	53	56
Curve at Hillcrest	1	1	2	3	5
Intersection	105	112	103	109	114
Other	0	0	1	0	0
<b>TOTAL</b>	<b>555</b>	<b>550</b>	<b>530</b>	<b>586</b>	<b>553</b>

## ROAD DESIGNATION

Road Designation	Fatal Crashes				
	2008	2009	2010	2011	2012
Interstate	48	30	50	45	38
State	170	202	179	192	199
County	183	168	146	178	162
Municipal	111	101	105	113	100
Toll Roads	43	47	48	57	52
Other	0	2	2	1	2
<b>TOTAL</b>	<b>555</b>	<b>550</b>	<b>530</b>	<b>586</b>	<b>553</b>

NOTE: US roadways are included in the State Highway column. \*Other roadways include State, County and Municipal Parks and Institutions and US Government Property.

## AGE OF DRIVERS

Age of Driver	Fatal Crashes				
	2008	2009	2010	2011	2012
16 and under	6	3	3	2	4
Age 17	18	20	16	17	10
18 - 20	77	61	48	62	54
21 - 24	91	73	74	87	84
25 - 29	79	81	90	101	87
30 - 39	139	131	135	131	148
40 - 49	151	163	135	149	136
50 - 64	128	153	154	189	171
65 and over	105	133	118	126	118
Unknown*	16	15	25	15	11
<b>TOTAL</b>	<b>810</b>	<b>833</b>	<b>798</b>	<b>879</b>	<b>823</b>

## SEX OF DRIVERS

Sex of Driver	Fatal Crashes				
	2008	2009	2010	2011	2012
Male	609	594	568	648	608
Female	186	224	206	215	203
Unknown	15	15	24	16	12
<b>TOTAL</b>	<b>810</b>	<b>833</b>	<b>798</b>	<b>879</b>	<b>823</b>

\* Unknown includes hit-and-run and parked vehicle crashes where driver information is not known or applicable.

## WHAT DRIVERS WERE DOING

Driver Pre-Crash Action	Fatal Crashes				
	2008	2009	2010	2011	2012
Going Straight Ahead	563	548	529	588	570
Making Right Turn	8	7	0	9	10
Making Left Turn	57	47	57	62	58
Making U Turn	4	1	2	4	2
Starting From Parked	3	2	1	3	1
Starting In Traffic	7	8	11	7	11
Slowing or Stopping	16	7	25	12	17
Stopped in Traffic	11	39	24	39	19
Parking	1	1	1	1	1
Parked	6	2	1	3	5
Changing Lanes	20	17	21	16	17
Entering Traffic Lane	5	3	3	0	2
Backing	7	4	4	4	3
Driverless / Moving	0	0	0	0	0
Passing	16	14	8	12	11
Negotiating Curve	75	125	104	110	88
Driving on Shoulder	1	2	2	3	5
Right Turn on Red	1	2	0	0	0
Other	7	2	3	5	2
Unknown	2	2	2	1	1
<b>TOTAL</b>	<b>810</b>	<b>833</b>	<b>798</b>	<b>879</b>	<b>823</b>

## WHAT PEDESTRIANS WERE DOING

Pedestrian Pre-Crash Action	Fatal Crashes				
	2008	2009	2010	2011	2012
Crossing at Marked Crosswalk	22	28	27	20	38
Crossing at Unmarked Crosswalk	12	17	6	7	8
Crossing Where Prohibited	54	56	53	61	55
Other Pedestrian Action in Roadway	21	32	32	24	31
Pedestrian Off Of Roadway	2	7	7	4	8
Other Pedestrian Action	27	17	16	27	23
<b>TOTAL</b>	<b>138</b>	<b>157</b>	<b>141</b>	<b>143</b>	<b>163</b>

## CONTRIBUTING CIRCUMSTANCES

Contributing Circumstances	2008	2009	2010	2011	2012
Unsafe Speed	115	78	83	119	98
Driver Inattention	153	158	130	177	175
Failed to Obey Traffic Control	36	40	38	41	39
Failed to Yield Right of Way	42	46	47	50	54
Improper Lane Change	9	8	14	7	6
Improper Passing	10	11	6	11	6
Failed to Use Turn Signal	0	0	0	0	0
Improper Turn	6	7	5	8	4
Following Too Closely	8	1	1	7	4
Unsafe Backing	2	3	3	3	2
Improper Vehicle Lights	0	0	1	0	3
Traveling Wrong Way	7	10	5	6	6
Improper Parking	1	0	0	0	1
Failure to Keep Right	41	61	64	37	33
Other Driver Action	40	41	45	28	28
Mechanical Failure	5	1	2	3	6
Road / Environmental Factor	1	3	7	6	5
Pedestrian Violation	114	128	112	111	126
Pedalcyclist Violation	17	11	8	13	9
<b>TOTAL</b>	<b>607</b>	<b>607</b>	<b>571</b>	<b>627</b>	<b>605</b>

NOTE: In some crashes, alcohol and/or drug involvement may have contributed to the crash, however other driving actions are the proximate cause of the crash. For a detailed analysis of alcohol and drug related crashes, see the Alcohol Factor Report on Page 10.

# SPECIFIC AREAS OF CONCERN

## INTERSTATE HIGHWAY FATALITIES

The Interstate Highway System of New Jersey is 100% completed, with 420.32 miles open to the motoring public. During 2012, the death rate averaged 5.92 deaths per month and 1 death for every 5.92 miles of highway. A concise analysis of victim classification, alcohol involvement, driver ages, contributing circumstances and manner of collision is outlined on the following page.

## INTERSTATE HIGHWAY MILEAGE

Highway Number	Mileage Open	Fatal Crashes by Highway
I-76	3.04	1
I-78	67.83	11
I-80	68.35	13
I-95	86.73	25
I-195	34.17	0
I-278	2.00	0
I-280	17.85	5
I-287	67.54	1
I-295	68.06	5
I-676	4.75	2
<b>TOTAL</b>	<b>420.32</b>	<b>63</b>

I-95 includes sections of the New Jersey Turnpike.

# INTERSTATE HIGHWAY FATALITIES

2012

Interstate Fatal Crashes: 63

Interstate Fatalities: 71

## Victim Classification

Drivers	45
Passengers	19
Pedestrians	7
Pedalcyclists	0
<b>TOTAL</b>	<b>71</b>

## Age of Drivers

16 & under	0
17	0
18 - 20	5
21 - 24	10
25 - 29	10
30 - 39	23
40 - 49	20
50 - 64	25
65 & over	8
Unknown	3
<b>TOTAL</b>	<b>104</b>

## Contributing Circumstances

Unsafe Speed	8
Driver Inattention	35
Improper Lane Change	3
Improper Passing	1
Failed to Use Turn Signal	0
Following Too Closely	0
Traveling Wrong Way	1
Failure to Keep Right	0
Mechanical Failure	2
Road / Environmental Factor	0
Pedestrian Violation	6
Pedalcyclist Violation	0
Other / Unknown	9
No Improper Driving	45
<b>TOTAL</b>	<b>110</b>

## Manner of Collision

Angle	0
Same Direction - Rear End	13
Opposite Direction - Head On / Angular	3
Opposite Direction - Left / U-Turn	0
Fixed Object	26
Pedestrian	5
Sideswipe	7
Overturned	5
Other	4
<b>TOTAL</b>	<b>63</b>

## Victim Alcohol Factors

	.01% - .03%	.04% - .07%	.08% - .10%	.11% & over	Negative	No Test	TOTAL
Drivers	3	1	3	7	27	4	45
Passengers	1	0	1	3	8	6	19
Pedestrians	2	0	0	2	2	1	7
Pedalcyclists	0	0	0	0	0	0	0
<b>TOTAL</b>	<b>6</b>	<b>1</b>	<b>4</b>	<b>12</b>	<b>37</b>	<b>11</b>	<b>71</b>

Six drivers tested positive for alcohol and drugs (Illicit & Medication).

Two drivers and 1 passenger tested positive for drugs (Illicit & Medication) alone.

# FATAL PEDALCYCLE CRASHES

	2008	2009	2010	2011	2012
Pedalcycle Crashes	19	14	13	17	14
Fatalities	20	14	13	17	14

## Age of Victim

	2008	2009	2010	2011	2012
0 - 3	0	0	0	0	0
4 - 10	0	0	0	0	0
11 - 15	1	3	2	0	0
16 - 20	2	1	1	1	1
21 - 30	4	3	2	2	3
31 - 40	2	0	1	1	0
41 - 50	4	4	4	3	1
51 - 60	3	1	1	5	5
61 & over	4	2	2	5	4
Unknown	0	0	0	0	0
<b>TOTAL</b>	<b>20</b>	<b>14</b>	<b>13</b>	<b>17</b>	<b>14</b>

## Classification of Victim

	2008	2009	2010	2011	2012
Drivers	19	14	13	17	14
Passengers	0	0	0	0	0
<b>TOTAL</b>	<b>19</b>	<b>14</b>	<b>13</b>	<b>17</b>	<b>14</b>

## Contributing Circumstances

	2008	2009	2010	2011	2012
No Improper Driving	2	3	5	4	5
Driver Inattention	2	1	0	4	1
Failed to Yield Right of Way	4	4	3	2	2
Failed to Obey Traffic Control	8	3	3	2	0
Failure to Keep Right	1	0	0	2	0
Improper Turn	0	0	0	0	0
Other	2	3	2	3	6
Unknown	0	0	0	0	0
<b>TOTAL</b>	<b>19</b>	<b>14</b>	<b>13</b>	<b>17</b>	<b>14</b>

## ALCOHOL/DRUG INVOLVEMENT

Of the 14 pedalcyclist fatalities, 11 were tested. Of those 11 tested, 1 tested positive for drugs only, 1 tested positive for alcohol only and 0 tested positive for alcohol and drugs. Nine were negative for alcohol and/or drugs and 3 were not tested.

# FATAL MOTORCYCLE CRASHES

	2008	2009	2010	2011	2012
Motorcycle Crashes	80	66	69	90	76
Fatalities	82	68	72	94	78*

\* Includes 1 Pedestrian killed.

## Age of Drivers

	2008	2009	2010	2011	2012
16 & under	0	0	0	0	0
17 - 20	9	4	2	7	2
21 - 30	22	14	25	33	23
31 - 40	15	20	10	18	16
Over 40	31	25	30	33	30
<b>TOTAL</b>	<b>77</b>	<b>63</b>	<b>67</b>	<b>91</b>	<b>71</b>

## Classification of Victim

	2008	2009	2010	2011	2012
Drivers	77	63	66	90	71
Passengers	4	4	5	3	6
<b>TOTAL</b>	<b>81</b>	<b>67</b>	<b>71</b>	<b>93</b>	<b>77</b>

## Contributing Circumstances

	'08	'09	'10	'11	'12
Unsafe Speed	22	22	19	34	27
Driver Inattention	19	18	13	27	13
Improper Lane Change	0	1	1	0	0
Improper Passing	3	5	1	3	3
Failed to Use Turn Signal	0	0	0	0	0
Following Too Closely	2	0	0	1	1
Failure to Keep Right	4	3	6	0	2
Mechanical Failure	0	0	0	0	0
Road/Environmental Factor	0	2	0	0	1
Pedestrian Violation	0	1	0	0	1
Pedalcyclist Violation	0	0	0	0	0
Other/Unknown	12	3	0	8	7
No Improper Driving	15	9	27	18	17
<b>TOTAL</b>	<b>77</b>	<b>64</b>	<b>67</b>	<b>91</b>	<b>72</b>

## Manner of Collision

	'08	'09	'10	'11	'12
Angle	12	9	12	15	13
Same Direction - Rear End	6	6	5	12	4
Opposite Direction - Head On/Angular	9	3	11	4	11
Opposite Direction - Left/U-Turn	9	8	12	12	13
Fixed Object	25	20	20	30	17
Pedestrian	1	1	0	0	1
Other*	4	2	3	3	6
Sideswipe	7	8	4	4	2
Overtaken	7	9	2	10	9
<b>TOTAL</b>	<b>80</b>	<b>66</b>	<b>69</b>	<b>90</b>	<b>76</b>

## Victim Alcohol Factors

	.01% - .03%	.04% - .07%	.08% - .10%	.11% & over	Negative	No Test	TOTAL
Drivers	4	2	4	11	44	6	71
Passengers	0	0	0	1	3	2	6
<b>TOTAL</b>	<b>4</b>	<b>2</b>	<b>4</b>	<b>12</b>	<b>47</b>	<b>8</b>	<b>77</b>

Seven deceased drivers and 0 passengers tested positive for alcohol and drugs (Illicit & Medication). Twelve deceased drivers and 1 passenger tested positive for drugs (Illicit & Medication) alone.



# FATAL TRACTOR-TRAILER CRASHES

	2008	2009	2010	2011	2012
Tractor-Trailer Crashes	29	40	29	26	28
Fatalities	32	46	29	28	32

## Manner of Collision

	'08	'09	'10	'11	'12
Angle	2	7	2	2	4
Same Direction - Rear End	5	7	8	4	9
Opposite Direction - Head On/Angular	9	5	3	4	1
Opposite Direction - Left/U-Turn	0	1	1	1	1
Fixed Object	1	3	3	1	4
Pedestrian	1	7	4	6	4
Other	7	4	4	4	2
Sideswipe	2	5	2	2	2
Overtuned	2	1	2	2	1
<b>TOTAL</b>	<b>29</b>	<b>40</b>	<b>29</b>	<b>26</b>	<b>28</b>

## Victim Classification

	2008	2009	2010	2011	2012
Drivers	5	2	4	4	3
Passengers	0	1	0	0	0
<b>TOTAL</b>	<b>5</b>	<b>3</b>	<b>4</b>	<b>4</b>	<b>3</b>

## Other Victim Classifications

	2008	2009	2010	2011	2012
Drivers	20	25	17	11	21
Passengers	4	11	2	7	4
Pedestrians	1	7	4	6	4
Pedalcyclists	2	0	1	0	0
<b>TOTAL</b>	<b>27</b>	<b>43</b>	<b>24</b>	<b>24</b>	<b>29</b>

## Tractor-Trailer Contributing Circumstances

	'08	'09	'10	'11	'12
Unsafe Speed	2	1	1	1	0
Driver Inattention	5	4	4	5	4
Improper Lane Change	0	0	2	0	0
Improper Passing	0	0	0	0	0
Failed to Use Turn Signal	0	0	0	0	0
Following Too Closely	0	0	0	0	0
Failure to Keep Right	0	1	0	0	0
Mechanical Failure	1	0	0	0	0
Road/Environmental Factor	0	0	0	0	0
Other/Unknown	1	7	1	4	1
No Improper Driving	19	25	21	15	23
<b>TOTAL</b>	<b>28</b>	<b>38</b>	<b>29</b>	<b>25</b>	<b>28</b>

## Other Involved Vehicle Contributing Circumstances

	'08	'09	'10	'11	'12
Unsafe Speed	1	3	1	1	5
Driver Inattention	9	10	8	6	11
Improper Lane Change	2	1	1	1	0
Improper Passing	1	1	1	1	0
Failed to Use Turn Signal	0	0	0	0	0
Following Too Closely	0	0	0	0	0
Failure to Keep Right	5	7	2	2	0
Mechanical Failure	0	0	0	0	0
Road/Environmental Factor	0	0	0	0	0
Other/Unknown	4	9	4	2	3
No Improper Driving	12	21	14	5	11
Pedestrian Violation	0	0	0	0	0
No Pedestrian Violation	0	0	0	0	0
<b>TOTAL</b>	<b>34</b>	<b>52</b>	<b>31</b>	<b>18</b>	<b>30</b>

## TRACTOR-TRAILER VICTIM ALCOHOL FACTORS

	VICTIM ALCOHOL FACTORS						
	.01% - .03%	.04% - .07%	.08% - .10%	.11% & over	Negative	No test	TOTAL
Drivers	0	0	0	0	3	0	3
Passengers	0	0	0	0	0	0	0
<b>TOTAL</b>	<b>0</b>	<b>0</b>	<b>0</b>	<b>0</b>	<b>3</b>	<b>0</b>	<b>3</b>

## OTHER VICTIM ALCOHOL FACTORS

	VICTIM ALCOHOL FACTORS						
	.01% - .03%	.04% - .07%	.08% - .10%	.11% & over	Negative	No test	TOTAL
Drivers	2	1	0	2	12	4	21
Passengers	0	0	0	0	0	4	4
Pedalcyclists	0	0	0	0	0	0	0
Pedestrians	1	0	0	2	1	0	4
<b>TOTAL</b>	<b>3</b>	<b>1</b>	<b>0</b>	<b>4</b>	<b>13</b>	<b>8</b>	<b>29</b>

Three drivers tested positive for drugs.

## SAFETY EQUIPMENT USAGE

Safety Equipment Used	Driver survived	Driver killed	Passenger killed
Unknown	32	11	5
None	22	49	37
Lap Belt	3	0	1
Harness	0	1	0
Lap Belt & Harness	299	38	19
Child Restraint	0	0	1
Helmet	9	53	3
Airbag Only	17	70	18
Airbag & Seatbelts	130	79	19
Safety Vest (Ped only)	0	0	0
Unapproved Helmet	1	8	0
Other	0	0	0
<b>Total</b>	<b>513</b>	<b>309</b>	<b>103</b>

Based on the various sources of information (accident reports, observations, interviews, evidence), the seat belt data may not be completely reliable.

## 17 - 20 AGE GROUP

Listed below are the 17 to 20-year-old drivers involved in fatal motor vehicle crashes.

Year	Total fatal crashes 17 - 20 drivers	Total drivers involved	Number of drivers drunk*
2012	64	64	7

\* .08 & over

2012	17 years old	18 years old	19 years old	20 years old
Total Drivers Involved	10	14	14	26
Number of Drivers Drunk	0	0	0	7

### FATAL CRASHES WITH ALCOHOL INVOLVED

2012	17 years old	18 years old	19 years old	20 years old
Crashes	1	0	1	8

### VICTIM CLASSIFICATION

2012	17 years old	18 years old	19 years old	20 years old
Drivers	2	4	5	12
Passengers	3	5	3	6

## FATAL CRASHES AND PERSONS KILLED FOR SELECTED HOLIDAY PERIODS IN NEW JERSEY

Holiday				Fatal Crashes	Persons Killed
Memorial Day					
	2008	(3)	72 Hours	5	5
	2009	(3)	72 Hours	7	7
	2010	(3)	72 Hours	7	8
	2011	(3)	72 Hours	8	8
	2012	(3)	72 Hours	4	4
Fourth of July					
	2008	(3)	72 Hours	8	9
	2009	(3)	72 Hours	4	4
	2010	(3)	72 Hours	11	13
	2011	(3)	72 Hours	7	9
	2012	(1)	24 Hours	7	7
Labor Day					
	2008	(3)	72 Hours	6	6
	2009	(3)	72 Hours	4	5
	2010	(3)	72 Hours	7	7
	2011	(3)	72 Hours	4	4
	2012	(3)	72 Hours	3	3
Thanksgiving					
	2008	(4)	96 Hours	9	9
	2009	(4)	96 Hours	8	10
	2010	(4)	96 Hours	5	5
	2011	(4)	96 Hours	11	11
	2012	(4)	96 Hours	7	9
Christmas					
	2008	(4)	96 Hours	4	5
	2009	(3)	72 Hours	3	3
	2010	(3)	72 Hours	6	6
	2011	(3)	72 Hours	7	7
	2012	(4)	96 Hours	11	11
New Year's					
	2008-09	(4)	96 Hours	6	6
	2009-10	(3)	72 Hours	0	0
	2010-11	(3)	72 Hours	2	2
	2011-12	(3)	72 Hours	7	8
	2012-13	(4)	96 Hours	4	4

Figures in parentheses show the number of whole days in each holiday period.

## TEN YEAR EXPERIENCE

Years	Fatal Crashes	Fatalities	Drivers	Passengers	Pedestrians	Pedalcyclists	Motorcycles*	Mopeds*	Alcohol Involvement
2003	666	735	416	171	137	11	58	0	32.5%
2004	684	732	425	131	151	16	74	0	31.9%
2005	691	748	427	150	154	17	64	0	33.1%
2006	709	771	430	162	167	12	103	0	31.3%
2007	674	724	429	133	150	12	87	1	28.5%
2008	555	590	320	112	138	20	82	1	31.7%
2009	550	584	315	98	157	14	68	0	27.9%
2010	530	556	303	99	141	13	72	0	30.6%
2011	586	627	362	105	143	17	94	0	31.1%
2012	553	589	309	103	163	14	78	0	28.7%
<b>TOTAL</b>	<b>6,198</b>	<b>6,656</b>	<b>3,736</b>	<b>1,264</b>	<b>1,501</b>	<b>146</b>	<b>780</b>	<b>2</b>	<b>30.8%</b>

\* Included in "Driver Totals" - If passenger, included in "Passenger Totals."

# NJSP FATAL CRASH INVESTIGATIONS SUMMARY BY TROOP

## LEGEND

EXPRESSWAY . . . . . Atlantic City Expressway	TURNPIKE . . . . . New Jersey Turnpike
CR . . . . . County Road	MP . . . . . Milepost
PARKWAY . . . . . Garden State Parkway	SH . . . . . State Highway
PIP . . . . . Palisades Interstate Parkway	

### TROOP A

Date	Time	Station	Road	MP	Municipality	County	Contributing Circumstances
01/03/2012	1324	PORT NORRIS	130 N LUMMIS MILL RD	0.0	FAIRFIELD TWSP	CUMBERLAND	UNSAFE SPEED
01/04/2012	1917	WOODSTOWN	FORSYTHIA LN	0.0	PILES GROVE TWSP	SALEM	DRUNK DRIVING
01/06/2012	0903	BUENA VISTA	SH 322	33.8	FOLSOM BORO	ATLANTIC	DRIVER INATTENTION
01/26/2012	1019	BELLMAWR	I-76	0.8	GLOUCESTER CITY	CAMDEN	OTHER DRIVER ACTION
02/21/2012	1907	BRIDGETON	CR 659	7.5	DEERFIELD TWSP	CUMBERLAND	DRIVER INATTENTION
03/05/2012	1722	A.C.E.	EXPRESSWAY	33.5	WINSLOW TWSP	CAMDEN	DRUNK DRIVING
03/05/2012	1824	BUENA VISTA	W 6TH RD	0.0	BUENA VISTA TWSP	ATLANTIC	OTHER DRIVER ACTION
04/13/2012	1454	BELLMAWR	I-676	3.3	CAMDEN CITY	CAMDEN	UNDER INFLUENCE OF DRUGS
04/14/2012	1951	BRIDGETON	LOWER MILL RD	0.0	PITTSBURGH TWSP	SALEM	UNDER INFLUENCE OF DRUGS
05/01/2012	1829	BRIDGETON	CR 540	31.1	PITTSBURGH TWSP	SALEM	DRIVER INATTENTION
05/09/2012	0707	BRIDGETON	SH 40	21.5	PITTSBURGH TWSP	SALEM	UNDER INFLUENCE OF DRUGS
06/02/2012	1140	BELLMAWR	I-676	2.0	CAMDEN CITY	CAMDEN	DRIVER INATTENTION
06/12/2012	0515	BELLMAWR	SH 42	11.9	DEPTFORD TWSP	GLOUCESTER	DRUNK DRIVING
06/13/2012	1601	PORT NORRIS	CR 616	2.8	MAURICE RIVER TWSP	CUMBERLAND	DRIVER INATTENTION, PEDESTRIAN VIOLATION
06/16/2012	1105	PORT NORRIS	SH 47	34.9	MAURICE RIVER TWSP	CUMBERLAND	DRIVER INATTENTION
07/11/2012	1533	A.C.E.	EXPRESSWAY	29.9	WINSLOW TWSP	CAMDEN	FOLLOWING TOO CLOSELY
07/12/2012	1743	WOODSTOWN	CR 617	2.3	PILES GROVE TWSP	SALEM	VEH COUPLING/HITCH/CHAINS
07/13/2012	2150	BELLMAWR	I-295	25.7	WESTVILLE BORO	GLOUCESTER	DRUNK DRIVING
07/14/2012	1523	WOODSTOWN	SH 49	18.7	QUINTON TWSP	SALEM	FAIL TO YIELD RIGHT OF WAY
07/26/2012	2020	PORT NORRIS	CR 553	13.2	LAWRENCE TWSP	CUMBERLAND	DRIVER INATTENTION
08/12/2012	1345	PORT NORRIS	CR 553	8.4	DOWNE TWSP	CUMBERLAND	DRIVER INATTENTION
08/21/2012	2334	A.C.E.	EXPRESSWAY	30.3	WINSLOW TWSP	CAMDEN	UNDER INFLUENCE OF DRUGS
09/07/2012	1932	WOODSTOWN	CR 540	2.8	MANNINGTON TWSP	SALEM	DRUNK DRIVING
09/22/2012	1725	BELLMAWR	SH 42	9.7	GLOUCESTER TWSP	CAMDEN	UNDER INFLUENCE OF DRUGS
10/26/2012	2104	BRIDGETON	SH 49	29.1	FAIRFIELD TWSP	CUMBERLAND	IMPROPER USE/NO LIGHTS, DRIVER INATTENTION
11/07/2012	1223	A.C.E.	EXPRESSWAY	35.8	WINSLOW TWSP	CAMDEN	UNSAFE SPEED
12/12/2012	0127	PORT NORRIS	CR 626	4.3	LAWRENCE TWSP	CUMBERLAND	DRIVER INATTENTION

### TROOP B

Date	Time	Station	Road	MP	Municipality	County	Contributing Circumstances
01/02/2012	1604	PERRYVILLE	I-78	17.5	CLINTON TWSP	HUNTERDON	DRIVER INATTENTION
01/03/2012	0919	TOTOWA-SUB	I-80	45.4	PARSIPPANY-TROY HIL	MORRIS	OTHER DRIVER ACTION
01/06/2012	0250	TOTOWA-SUB	I-80	66.9	HACKENSACK CITY	BERGEN	OTHER DRIVER ACTION
01/11/2012	1504	SUSSEX	SH 15	18.1	LAFAYETTE TWSP	SUSSEX	FAIL TO YIELD RIGHT OF WAY
01/14/2012	1535	HOPE	SH 94	1.0	KNOWLTON TWSP	WARREN	FAIL TO YIELD RIGHT OF WAY
02/25/2012	2159	SOMERVILLE	I-78	33.8	BERNARDS TWSP	SOMERSET	UNSAFE SPEED
03/15/2012	0151	TOTOWA-SUB	I-80	47.2	PARSIPPANY-TROY HIL	MORRIS	DRUNK DRIVING
04/07/2012	0605	TOTOWA-SUB	I-80	54.7	TOTOWA BORO	PASSAIC	DRIVER INATTENTION
04/10/2012	2303	TOTOWA-SUB	I-80	64.3	LODI BORO	BERGEN	UNDER INFLUENCE OF DRUGS, DRIVER INATTENTION
04/14/2012	0644	TOTOWA-SUB	I-280	1.7	PARSIPPANY-TROY HIL	MORRIS	UNDER INFLUENCE OF DRUGS
04/20/2012	0020	TOTOWA-SUB	I-280	13.0	NEWARK CITY	ESSEX	PEDESTRIAN VIOLATION
04/20/2012	1916	SUSSEX	SH 15	18.7	LAFAYETTE TWSP	SUSSEX	FAIL TO YIELD RIGHT OF WAY
04/29/2012	0556	TOTOWA-SUB	I-80	55.9	TOTOWA BORO	PASSAIC	DRIVER INATTENTION
05/13/2012	0743	MEADOWLANDS	BERRY CREEK RD	0.0	EAST RUTHERFORD BOR	BERGEN	UNSAFE SPEED
05/14/2012	0048	PERRYVILLE	I-78	8.2	BETHLEHEM TWSP	HUNTERDON	DRIVER INATTENTION, IMPROPER PARKING
05/26/2012	1620	SUSSEX	SH 23	49.0	MONTAGUE TWSP	SUSSEX	DRUNK DRIVING
05/28/2012	1522	SOMERVILLE	SH 440	1.8	WOODBIDGE TWSP	MIDDLESEX	OTHER DRIVER ACTION
06/16/2012	1607	SOMERVILLE	I-78	54.2	HILLSIDE TWSP	UNION	DRIVER INATTENTION
06/20/2012	1625	TOTOWA-SUB	I-280	6.8	WEST ORANGE TOWN	ESSEX	DRIVER INATTENTION
07/16/2012	2243	TOTOWA-SUB	I-80	59.8	PATERSON CITY	PASSAIC	PEDESTRIAN VIOLATION
07/21/2012	0940	SUSSEX	SH 23	45.3	WANTAGE TWSP	SUSSEX	FAIL TO YIELD RIGHT OF WAY
07/22/2012	1703	TOTOWA-SUB	I-280	15.8	HARRISON TOWN	HUDSON	IMPROPER LANE CHANGE
07/25/2012	0530	PERRYVILLE	I-78	29.7	BEDMINSTER TWSP	SOMERSET	UNDER INFLUENCE OF DRUGS
07/25/2012	1049	WASHINGTON	SH 46	15.1	LIBERTY TWSP	WARREN	FAILURE TO KEEP RIGHT
09/05/2012	2014	SUSSEX	CR 521	14.5	STILLWATER TWSP	SUSSEX	UNDER INFLUENCE OF DRUGS
09/05/2012	2054	NETCONG	I-80	34.4	ROCKAWAY TWSP	MORRIS	PEDESTRIAN VIOLATION

Date	Time	Station	Road	MP	Municipality	County	Contributing Circumstances
09/18/2012	2346	TOTOWA-SUB	I-280	11.4	EAST ORANGE CITY	ESSEX	PEDESTRIAN VIOLATION
10/03/2012	1803	HOPE	CR 517	20.5	ALLAMUCHY TWSP	WARREN	FAIL TO YIELD RIGHT OF WAY
10/19/2012	0633	PERRYVILLE	I-78	5.4	GREENWICH TWSP	WARREN	UNSAFE SPEED, OTHER DRIVER ACTION
10/22/2012	0311	SUSSEX	SH 206	117.0	BRANCHVILLE BOR	SUSSEX	DRUNK DRIVING
11/02/2012	2013	NETCONG	I-287	31.8	HARDING TWSP	MORRIS	DRUNK DRIVING
11/09/2012	1103	NETCONG	SH 24	0.5	HANOVER TWSP	MORRIS	DRIVER INATTENTION
11/10/2012	2200	TOTOWA-SUB	CR 508	10.5	NEWARK CITY	ESSEX	FAIL TO OBEY TRAF CTRL DEV
11/11/2012	0547	TOTOWA-SUB	I-80	57.8	PATERSON CITY	PASSAIC	DRIVER INATTENTION
11/18/2012	1235	SUSSEX	SH 206	116.5	BRANCHVILLE BOR	SUSSEX	FAIL TO YIELD RIGHT OF WAY
11/20/2012	0821	TOTOWA-SUB	I-80	56.8	WOODLAND PARK BORO	PASSAIC	DRIVER INATTENTION
11/22/2012	0233	SOMERVILLE	I-78	33.8	BERNARDS TWSP	SOMERSET	DRIVER INATTENTION
12/02/2012	0046	NETCONG	I-80	40.7	PARSIPPANY-TROY HIL	MORRIS	DRUNK DRIVING
12/02/2012	2120	HOPE	I-80	5.3	KNOWLTON TWSP	WARREN	UNSAFE SPEED
12/08/2012	1937	TOTOWA-SUB	I-80	63.7	LODI BORO	BERGEN	IMPROPER LANE CHANGE
12/10/2012	1128	SOMERVILLE	I-78	52.0	UNION TWSP	UNION	DRIVER INATTENTION
12/24/2012	1908	SOMERVILLE	SH 440	1.7	WOODBIDGE TWSP	MIDDLESEX	DRUNK DRIVING

### TROOP C

Date	Time	Station	Road	MP	Municipality	County	Contributing Circumstances
02/06/2012	1517	RED LION	SH 70	24.1	SOUTHAMPTON TWSP	BURLINGTON	FAILURE TO KEEP RIGHT
02/12/2012	0759	RED LION	CR 644	1.7	SOUTHAMPTON TWSP	BURLINGTON	UNSAFE SPEED
02/14/2012	1424	RED LION	CR 616	15.8	SOUTHAMPTON TWSP	BURLINGTON	FAILURE TO KEEP RIGHT
02/16/2012	1109	HAMILTON-SUB	SH 1	0.0	TRENTON	MERCER	PEDESTRIAN VIOLATION
03/02/2012	0214	BORDENTOWN	I-295	40.0	MOUNT LAUREL TWSP	BURLINGTON	DRUNK DRIVING
03/05/2012	1049	RED LION	SH 70	23.5	SOUTHAMPTON TWSP	BURLINGTON	FAILURE TO KEEP RIGHT
03/23/2012	1816	BORDENTOWN	DAVENPORT AVE	0.0	HAINESPORT TWSP	BURLINGTON	DRIVER INATTENTION, PEDESTRIAN VIOLATION
04/08/2012	1647	BORDENTOWN	SH 206	29.0	SPRINGFIELD TWSP	BURLINGTON	UNSAFE SPEED
04/17/2012	2125	BORDENTOWN	SH 38	14.3	HAINESPORT TWSP	BURLINGTON	UNDER INFLUENCE OF DRUGS
05/15/2012	0209	BORDENTOWN	I-295	43.6	MOUNT LAUREL TWSP	BURLINGTON	DRUNK DRIVING
05/16/2012	0057	RED LION	CR 532	11.3	TABERNACLE TWSP	BURLINGTON	UNSAFE SPEED
05/18/2012	1835	TUCKERTON	SH 9	65.5	EAGLESWOOD TWSP	OCEAN	UNSAFE SPEED, FAIL TO YIELD RIGHT OF WAY
06/01/2012	1821	HAMILTON-SUB	MILLSTONE RD	3.6	MILLSTONE TWSP	MONMOUTH	UNSAFE SPEED
06/01/2012	1946	KINGWOOD	CR 523	0.0	STOCKTON BORO	HUNTERDON	WRONG WAY
06/17/2012	1018	TUCKERTON	WASHINGTON TPK	0.0	WASHINGTON TWSP	BURLINGTON	FAIL TO OBEY TRAF CTRL DEV
06/24/2012	1434	TUCKERTON	CR 654	2.1	BASS RIVER TWSP	BURLINGTON	UNDER INFLUENCE OF DRUGS
06/24/2012	2209	BORDENTOWN	CR 674	6.6	HAINESPORT TWSP	BURLINGTON	DRUNK DRIVING
07/01/2012	0045	TUCKERTON	CR 654	0.4	BASS RIVER TWSP	BURLINGTON	ANIMALS IN ROADWAY
07/03/2012	1039	RED LION	SH 70	25.0	SOUTHAMPTON TWSP	BURLINGTON	IMPROPER PASSING
07/20/2012	1008	HAMILTON-SUB	TURNPIKE	0.5	EWING TWSP	MERCER	DRIVER INATTENTION
08/10/2012	1238	RED LION	SH 206	15.5	TABERNACLE TWSP	BURLINGTON	UNDER INFLUENCE OF DRUGS
08/21/2012	1701	TUCKERTON	CR 563	34.6	WASHINGTON TWSP	BURLINGTON	DRIVER INATTENTION
09/05/2012	1626	HAMILTON-SUB	CR 527	23.3	MANALAPAN TWSP	MONMOUTH	UNDER INFLUENCE OF DRUGS
09/26/2012	1911	HAMILTON-SUB	CR 537	43.5	MILLSTONE TWSP	MONMOUTH	UNDER INFLUENCE OF DRUGS
09/29/2012	1329	BORDENTOWN	I-295	47.3	BURLINGTON TWSP	BURLINGTON	DRIVER INATTENTION
10/01/2012	0839	HAMILTON-SUB	TURNPIKE	8.2	LAWRENCE TWSP	MERCER	DRIVER INATTENTION
10/13/2012	1408	RED LION	BUZZARD HILL RD	0.0	WOODLAND TWSP	BURLINGTON	FAILURE TO KEEP RIGHT, IMPROPER PASSING
10/20/2012	0356	BORDENTOWN	I-295	46.9	BURLINGTON TWSP	BURLINGTON	DRUNK DRIVING
10/21/2012	1335	HAMILTON-SUB	CR 524	12.4	UPPER FREEHOLD TWSP	MONMOUTH	FAIL TO YIELD RIGHT OF WAY
11/07/2012	2112	RED LION	SH 206	15.7	TABERNACLE TWSP	BURLINGTON	UNSAFE SPEED
11/09/2012	1047	TUCKERTON	SH 9	65.9	EAGLESWOOD TWSP	OCEAN	UNDER INFLUENCE OF DRUGS
12/08/2012	0036	HAMILTON-SUB	TURNPIKE	0.5	EWING TWSP	MERCER	DRIVER INATTENTION

### TROOP D

Date	Time	Station	Road	MP	Municipality	County	Contributing Circumstances
01/01/2012	0621	CRANBURY	TURNPIKE	85.7	EDISON TWSP	MIDDLESEX	DRUNK DRIVING
02/04/2012	1633	CRANBURY	TURNPIKE	95.9	CARTERET BORO	MIDDLESEX	DRIVER INATTENTION
03/08/2012	1658	NEWARK	TURNPIKE	99.3	ELIZABETH CITY	UNION	DRIVER INATTENTION
04/02/2012	1334	CRANBURY	TURNPIKE	81.4	EAST BRUNSWICK TWSP	MIDDLESEX	DRIVER INATTENTION
04/17/2012	1713	MOORESTOWN	TURNPIKE	55.7	CHESTERFIELD TWSP	BURLINGTON	DRIVER INATTENTION
04/25/2012	2344	NEWARK	78	6.8	JERSEY CITY	HUDSON	OTHER DRIVER ACTION
04/30/2012	1145	CRANBURY	TURNPIKE	75.2	SOUTH BRUNSWICK TWS	MIDDLESEX	DRIVER INATTENTION
05/29/2012	1619	NEWARK	TURNPIKE	99.4	ELIZABETH CITY	UNION	DRIVER INATTENTION
06/05/2012	1759	NEWARK	TURNPIKE	5.9	JERSEY CITY	HUDSON	OTHER DRIVER ACTION
06/29/2012	1418	MOORESTOWN	TURNPIKE	12.0	WOOLWICH TWSP	GLOUCESTER	TIRES
07/12/2012	1614	NEWARK	TURNPIKE	112.2	EAST RUTHERFORD BOR	BERGEN	DRIVER INATTENTION

Date	Time	Station	Road	MP	Municipality	County	Contributing Circumstances
07/12/2012	1619	NEWARK	78	64.9	JERSEY CITY	HUDSON	DRIVER INATTENTION
08/01/2012	0909	NEWARK	78	7.9	JERSEY CITY	HUDSON	DRIVER INATTENTION
08/09/2012	2327	MOORESTOWN	TURNPIKE	54.9	CHESTERFIELD TWSP	BURLINGTON	DRIVER INATTENTION
08/20/2012	1325	CRANBURY	TURNPIKE	80.0	EAST BRUNSWICK TWSP	MIDDLESEX	UNDER INFLUENCE OF DRUGS
08/30/2012	0507	NEWARK	TURNPIKE	104.9	NEWARK CITY	ESSEX	DRIVER INATTENTION
09/11/2012	0027	CRANBURY	TURNPIKE	68.0	EAST WINDSOR TWSP	MERCER	DRIVER INATTENTION
10/03/2012	0945	CRANBURY	TURNPIKE	60.7	ROBBINSVILLE TWSP	MERCER	TIRES
10/22/2012	0213	NEWARK	TURNPIKE	106.6	NEWARK CITY	ESSEX	PEDESTRIAN VIOLATION
11/15/2012	1558	CRANBURY	TURNPIKE	88.5	EDISON TWSP	MIDDLESEX	FAIL TO OBEY TRAF CTRL DEV
11/16/2012	1934	MOORESTOWN	TURNPIKE	36.4	MOUNT LAUREL TWSP	BURLINGTON	DRUNK DRIVING
12/07/2012	0035	NEWARK	TURNPIKE	107.7	KEARNY TOWN	HUDSON	DRUNK DRIVING
12/09/2012	0500	CRANBURY	TURNPIKE	95.2	CARTERET BORO	MIDDLESEX	PEDESTRIAN VIOLATION
12/27/2012	1011	MOORESTOWN	TURNPIKE	39.9	MOUNT LAUREL TWSP	BURLINGTON	NONE

### TROOP E

Date	Time	Station	Road	MP	Municipality	County	Contributing Circumstances
01/09/2012	0317	HOLMDEL	PARKWAY	102.1	TINTON FALLS BORO	MONMOUTH	DRIVER INATTENTION
01/20/2012	0958	HOLMDEL	PARKWAY	101.3	WALL TWSP	MONMOUTH	DRUNK DRIVING
01/24/2012	1340	BLOOMFIELD	PARKWAY	163.5	PARAMUS BORO	BERGEN	IMPROPER TURNING
01/28/2012	0516	BLOOMFIELD	PARKWAY	156.0	CLIFTON CITY	PASSAIC	DRUNK DRIVING
02/25/2012	1355	HOLMDEL	PARKWAY	130.9	WOODBIDGE TWSP	MIDDLESEX	OTHER DRIVER ACTION
03/04/2012	0142	BASS RIVER	PARKWAY	68.2	BARNEGAT TWSP	OCEAN	IMPROPER LANE CHANGE
03/16/2012	0134	HOLMDEL	PARKWAY	130.7	WOODBIDGE TWSP	MIDDLESEX	DRUNK DRIVING, UNDER INFLUENCE OF DRUGS
04/02/2012	0456	BASS RIVER	PARKWAY	61.8	STAFFORD TWSP	OCEAN	UNDER INFLUENCE OF DRUGS
06/02/2012	0703	BASS RIVER	PARKWAY	86.2	TOMS RIVER	OCEAN	UNDER INFLUENCE OF DRUGS
07/01/2012	1048	BLOOMFIELD	PARKWAY	167.1	WASHINGTON TWSP	BERGEN	UNSAFE SPEED, OTHER DRIVER ACTION
07/14/2012	2303	HOLMDEL	PARKWAY	126.3	SAYREVILLE BORO	MIDDLESEX	OTHER VEHICLE FACTOR, DRIVER INATTENTION
07/17/2012	0834	HOLMDEL	PARKWAY	92.0	BRICK TWSP	OCEAN	DRIVER INATTENTION
07/23/2012	0314	BASS RIVER	PARKWAY	19.7	UPPER TWSP	CAPE MAY	UNDER INFLUENCE OF DRUGS
07/27/2012	0157	HOLMDEL	PARKWAY	97.1	WALL TWSP	MONMOUTH	PEDESTRIAN VIOLATION
09/02/2012	0154	BASS RIVER	PARKWAY	76.7	LACEY TWSP	OCEAN	DRUNK DRIVING
09/15/2012	1856	HOLMDEL	PARKWAY	122.0	OLD BRIDGE TWSP	MIDDLESEX	DRUNK DRIVING
10/26/2012	2027	BASS RIVER	PARKWAY	86.1	TOMS RIVER	OCEAN	UNDER INFLUENCE OF DRUGS
11/11/2012	0602	BLOOMFIELD	PARKWAY	143.8	IRVINGTON TOWN	ESSEX	DRUNK DRIVING
11/18/2012	1437	BASS RIVER	PARKWAY	87.9	LAKESWOOD TWSP	OCEAN	UNDER INFLUENCE OF DRUGS
11/29/2012	0619	HOLMDEL	PARKWAY	121.8	SAYREVILLE BORO	MIDDLESEX	DRIVER INATTENTION
12/20/2012	2317	HOLMDEL	PARKWAY	98.4	WALL TWSP	MONMOUTH	PEDESTRIAN VIOLATION



# FATAL CRASHES BY COUNTY, MUNICIPALITY, DATE, TIME AND LOCATION

## LEGEND

EXPRESSWAY . . . . . Atlantic City Expressway	TURNPIKE . . . . . New Jersey Turnpike
CR . . . . . County Road	MP . . . . . Milepost
PARKWAY . . . . . Garden State Parkway	SH . . . . . State Highway
PIP . . . . . Palisades Interstate Parkway	

### ATLANTIC COUNTY

Municipality	Date	Day	Time	Road	MP	Persons Killed
FOLSOM BORO	01/06/2012	FRIDAY	0903	SH 322	33.8	1 DRIVER
HAMMONTON TOWN	01/08/2012	SUNDAY	1636	SH 30	29.6	1 PASSENGER
PLEASANTVILLE CITY	01/27/2012	FRIDAY	1622	CR 687	1.0	1 PASSENGER
HAMMONTON TOWN	02/12/2012	SUNDAY	1756	THIRTEENTH ST	0.0	1 DRIVER
HAMILTON TWSP	02/24/2012	FRIDAY	1707	CR 575	10.1	1 DRIVER
EGG HARBOR TWSP	02/26/2012	SUNDAY	1838	SH 40	53.2	1 PEDALCYCLIST
MULLICA TWSP	03/04/2012	SUNDAY	1741	CR 542	6.5	1 DRIVER
BUENA VISTA TWSP	03/05/2012	MONDAY	1824	W 6TH RD	0.0	1 DRIVER
EGG HARBOR TWSP	03/09/2012	FRIDAY	0115	SH 322	57.1	1 DRIVER
HAMMONTON TOWN	03/10/2012	SATURDAY	1311	SH 30	32.4	1 PASSENGER
VENTNOR CITY	05/05/2012	SATURDAY	2103	ATLANTIC AVE	0.0	1 PEDESTRIAN
EGG HARBOR CITY	05/17/2012	THURSDAY	0214	CR 563	18.2	1 DRIVER, 1 PASSENGER
HAMILTON TWSP	05/23/2012	WEDNESDAY	2044	SH 50	22.1	1 DRIVER
PLEASANTVILLE CITY	06/02/2012	SATURDAY	1732	WEST ADAMS AVE	0.0	1 DRIVER
GALLOWAY TWSP	06/21/2012	THURSDAY	0912	SH 30	47.5	1 DRIVER
HAMILTON TWSP	06/26/2012	TUESDAY	1905	SH 50	19.5	1 DRIVER
EGG HARBOR TWSP	06/27/2012	WEDNESDAY	1420	WEST JERSEY AVE	0.0	1 DRIVER
HAMILTON TWSP	06/29/2012	FRIDAY	1349	SH 322	45.1	1 PASSENGER
HAMILTON TWSP	07/02/2012	MONDAY	0323	LEIPZIG AVE	0.0	1 PASSENGER
ATLANTIC CITY	07/09/2012	MONDAY	2200	SH 30	58.2	1 PEDESTRIAN
EGG HARBOR TWSP	07/13/2012	FRIDAY	1234	CR 615	5.6	1 PASSENGER
NORTHFIELD CITY	07/18/2012	WEDNESDAY	1545	CR 563	5.1	1 DRIVER
EGG HARBOR CITY	07/20/2012	FRIDAY	0630	CR 563	21.0	1 DRIVER
PLEASANTVILLE CITY	08/28/2012	TUESDAY	1249	SH 322	59.2	1 PASSENGER
EGG HARBOR TWSP	09/05/2012	WEDNESDAY	1257	CR 615	5.1	1 DRIVER
NORTHFIELD CITY	09/15/2012	SATURDAY	1146	CR 585	5.5	1 DRIVER
ABSECON CITY	10/03/2012	WEDNESDAY	2318	SH 30	51.2	1 PEDESTRIAN
ABSECON CITY	11/04/2012	SUNDAY	2222	SH 30	51.1	1 PEDESTRIAN
EGG HARBOR TWSP	11/08/2012	THURSDAY	0515	SH 40	53.1	1 PEDESTRIAN
ABSECON CITY	11/12/2012	MONDAY	1852	SH 30	53.3	1 PEDESTRIAN
ABSECON CITY	11/19/2012	MONDAY	1751	SH 30	52.8	1 PEDESTRIAN

### BERGEN COUNTY

Municipality	Date	Day	Time	Road	MP	Persons Killed
UPPER SADDLE RIVER	01/02/2012	MONDAY	2130	SH 17	22.0	1 DRIVER
HACKENSACK CITY	01/06/2012	FRIDAY	0250	I-80	66.9	1 DRIVER
ENGLEWOOD CITY	01/20/2012	FRIDAY	0211	CR 49	6.9	2 PASSENGERS
CLIFFSIDE PARK BORO	01/23/2012	MONDAY	1428	CR 50	1.5	1 PEDESTRIAN
PARAMUS BORO	01/24/2012	TUESDAY	1340	PARKWAY	163.5	1 DRIVER
MAHWAH TWSP	01/30/2012	MONDAY	0913	SH 202	78.2	1 DRIVER
HASBROUCK HEIGHTS B	02/03/2012	FRIDAY	1559	WASHINGTON PL	0.0	1 DRIVER
FORT LEE BORO	02/26/2012	SUNDAY	1815	SH 67	0.9	1 PEDESTRIAN
FORT LEE BORO	02/27/2012	MONDAY	0911	EDWIN AVE	0.0	1 PEDESTRIAN
FRANKLIN LAKES BORO	03/16/2012	FRIDAY	2017	CR 117	0.7	1 DRIVER
FAIR LAWN BORO	03/29/2012	THURSDAY	0157	SH 208	1.8	1 PASSENGER
WESTWOOD BORO	04/05/2012	THURSDAY	1451	CR 59	6.7	1 DRIVER
LODI BORO	04/10/2012	TUESDAY	2303	I-80	64.3	1 DRIVER, 1 PASSENGER
ELMWOOD PARK BORO	04/17/2012	TUESDAY	1408	SH 4	0.4	1 PEDESTRIAN
EAST RUTHERFORD BOR	05/13/2012	SUNDAY	0743	BERRY CREEK RD	0.0	1 DRIVER
ELMWOOD PARK BORO	05/18/2012	FRIDAY	2142	SH 46	64.5	1 PEDESTRIAN
PARAMUS BORO	06/13/2012	WEDNESDAY	2149	SH 17	12.9	1 DRIVER
WASHINGTON TWSP	07/01/2012	SUNDAY	1048	PARKWAY	167.1	1 PASSENGER
ALPINE BORO	07/03/2012	TUESDAY	0315	PIP	5.4	1 DRIVER
EAST RUTHERFORD BOR	07/12/2012	THURSDAY	1614	TURNPIKE	112.2	1 DRIVER
RIVER EDGE BORO	07/25/2012	WEDNESDAY	2112	SH 4	5.0	1 PEDESTRIAN
HASBROUCK HEIGHTS B	07/28/2012	SATURDAY	0649	SH 17	8.4	1 DRIVER
PALISADES PARK BORO	07/30/2012	MONDAY	1622	SH 63	2.8	1 PEDESTRIAN
EDGEWATER BORO	08/04/2012	SATURDAY	0245	CR 25	0.3	1 DRIVER

Municipality	Date	Day	Time	Road	MP	Persons Killed
FORT LEE BORO	08/31/2012	FRIDAY	1842	TURNPIKE	122.5	1 PASSENGER
ALPINE BORO	09/03/2012	MONDAY	0253	PIP	9.1	1 DRIVER
HACKENSACK CITY	09/22/2012	SATURDAY	2300	SH 4	5.6	1 PEDESTRIAN
BERGENFIELD BORO	10/02/2012	TUESDAY	2138	DICK ST	0.0	1 DRIVER
HACKENSACK CITY	11/19/2012	MONDAY	1908	CR 57	1.2	1 PEDESTRIAN
CARLSTADT BORO	11/30/2012	FRIDAY	1821	CR 503	0.9	1 PEDESTRIAN
LODI BORO	12/08/2012	SATURDAY	1937	I-80	63.7	1 DRIVER

### BURLINGTON COUNTY

Municipality	Date	Day	Time	Road	MP	Persons Killed
DELTRAN TWSP	01/04/2012	WEDNESDAY	1901	SH 130	40.2	1 PEDESTRIAN
MOUNT LAUREL TWSP	01/24/2012	TUESDAY	1217	CR 612	1.6	1 DRIVER
DELTRAN TWSP	02/04/2012	SATURDAY	1743	SH 130	38.9	1 PEDESTRIAN
SOUTHAMPTON TWSP	02/06/2012	MONDAY	1517	SH 70	24.1	1 DRIVER
SOUTHAMPTON TWSP	02/12/2012	SUNDAY	0759	CR 644	1.7	1 PASSENGER
SOUTHAMPTON TWSP	02/14/2012	TUESDAY	1424	CR 616	15.8	1 PASSENGER
CHESTERFIELD TWSP	02/16/2012	THURSDAY	0818	CR 528	2.9	1 PASSENGER
PEMBERTON TWSP	02/28/2012	TUESDAY	1532	CR 530	4.2	1 DRIVER
MOUNT LAUREL TWSP	03/02/2012	FRIDAY	0214	I-295	40.0	1 DRIVER
SOUTHAMPTON TWSP	03/05/2012	MONDAY	1049	SH 70	23.5	1 DRIVER, 1 PASSENGER
HAINESPORT TWSP	03/23/2012	FRIDAY	1816	DAVENPORT AVE	0.0	1 PEDESTRIAN
SPRINGFIELD TWSP	04/08/2012	SUNDAY	1647	SH 206	29.0	1 DRIVER
BORDENTOWN TWSP	04/11/2012	WEDNESDAY	0534	RISING SUN RD	0.0	1 DRIVER
CHESTERFIELD TWSP	04/17/2012	TUESDAY	1713	TURNPIKE	55.7	1 DRIVER
HAINESPORT TWSP	04/17/2012	TUESDAY	2125	SH 38	14.3	1 PEDESTRIAN
MOUNT LAUREL TWSP	05/15/2012	TUESDAY	0209	I-295	43.6	1 DRIVER
TABERNACLE TWSP	05/16/2012	WEDNESDAY	0057	CR 532	11.3	1 PASSENGER
MOUNT HOLLY TWSP	05/25/2012	FRIDAY	2111	CR 541	17.5	1 PEDESTRIAN
WILLINGBORO TWSP	05/30/2012	WEDNESDAY	1912	CR 630	2.7	1 DRIVER
WASHINGTON TWSP	06/17/2012	SUNDAY	1018	WASHINGTON TPK	0.0	1 DRIVER
MOUNT LAUREL TWSP	06/19/2012	TUESDAY	1851	CR 607	2.2	1 DRIVER
EVESHAM TWSP	06/23/2012	SATURDAY	1702	SH 73	23.7	1 DRIVER
BASS RIVER TWSP	06/24/2012	SUNDAY	1434	CR 654	2.1	1 DRIVER
HAINESPORT TWSP	06/24/2012	SUNDAY	2209	CR 674	6.6	1 DRIVER
BASS RIVER TWSP	07/01/2012	SUNDAY	0045	CR 654	0.4	1 PASSENGER
SOUTHAMPTON TWSP	07/03/2012	TUESDAY	1039	SH 70	25.0	1 DRIVER
WILLINGBORO TWSP	07/12/2012	THURSDAY	1758	CR 626	4.7	1 DRIVER
BURLINGTON CITY	07/14/2012	SATURDAY	2056	SH 130	46.1	1 PEDESTRIAN
PEMBERTON TWSP	08/04/2012	SATURDAY	0152	SPRING TERR	0.0	1 PASSENGER
CHESTERFIELD TWSP	08/09/2012	THURSDAY	2327	TURNPIKE	54.9	1 DRIVER
TABERNACLE TWSP	08/10/2012	FRIDAY	1238	SH 206	15.5	1 DRIVER, 1 PASSENGER
WASHINGTON TWSP	08/21/2012	TUESDAY	1701	CR 563	34.6	1 DRIVER
MAPLE SHADE TWSP	08/24/2012	FRIDAY	2124	SH 73	29.1	1 PEDESTRIAN
CINNAMINSON TWSP	09/04/2012	TUESDAY	1329	CR 606	0.4	1 DRIVER
FLORENCE TWSP	09/16/2012	SUNDAY	0006	SH 130	34.1	1 PEDESTRIAN
BURLINGTON TWSP	09/29/2012	SATURDAY	1329	I-295	47.3	1 PASSENGER
WOODLAND TWSP	10/13/2012	SATURDAY	1408	BUZZARD HILL RD	0.0	1 DRIVER, 1 PASSENGER
BURLINGTON TWSP	10/20/2012	SATURDAY	0356	I-295	46.9	1 DRIVER
PEMBERTON TWSP	11/05/2012	MONDAY	0837	SH 70	30.8	1 DRIVER
TABERNACLE TWSP	11/07/2012	WEDNESDAY	2112	SH 206	15.7	1 DRIVER, 1 PASSENGER
MOUNT LAUREL TWSP	11/16/2012	FRIDAY	1934	TURNPIKE	36.4	1 DRIVER
WILLINGBORO TWSP	11/17/2012	SATURDAY	0357	CR 626	4.5	1 PASSENGER
MAPLE SHADE TWSP	11/25/2012	SUNDAY	0104	SH 73	28.3	1 PEDESTRIAN
WILLINGBORO TWSP	12/03/2012	MONDAY	1958	SH 130	42.7	1 PEDESTRIAN
DELTRAN TWSP	12/22/2012	SATURDAY	0050	SH 130	38.9	1 PEDESTRIAN
MOUNT LAUREL TWSP	12/27/2012	THURSDAY	1011	TURNPIKE	39.9	1 DRIVER, 2 PASSENGERS
PALMYRA BORO	12/30/2012	SUNDAY	0338	SH 73	33.8	1 DRIVER

### CAMDEN COUNTY

Municipality	Date	Day	Time	Road	MP	Persons Killed
CHERRY HILL TWSP	01/18/2012	WEDNESDAY	1733	CR 644	3.4	1 PEDESTRIAN
CHERRY HILL TWSP	01/19/2012	THURSDAY	1149	CR 561	42.8	1 DRIVER
CAMDEN CITY	01/22/2012	SUNDAY	2039	CR 561	50.7	1 DRIVER
GLOUCESTER CITY	01/26/2012	THURSDAY	1019	I-76	0.8	1 DRIVER
CAMDEN CITY	02/23/2012	THURSDAY	1608	MEMORIAL AVE	0.0	1 DRIVER
WINSLOW TWSP	03/05/2012	MONDAY	1722	EXPRESSWAY	33.5	1 DRIVER
CAMDEN CITY	03/17/2012	SATURDAY	2139	CR 543	1.4	1 PEDESTRIAN
CLEMENTON BORO	03/18/2012	SUNDAY	0547	SH 30	13.6	1 PEDESTRIAN
BERLIN TWSP	04/04/2012	WEDNESDAY	0526	SH 73	16.3	1 DRIVER
CAMDEN CITY	04/13/2012	FRIDAY	1454	I-676	3.3	1 DRIVER

Municipality	Date	Day	Time	Road	MP	Persons Killed
CHERRY HILL TWSP	04/29/2012	SUNDAY	2059	CR 544	9.6	1 DRIVER
CAMDEN CITY	06/02/2012	SATURDAY	1140	I-676	2.0	1 PASSENGER
CLEMENTON BORO	06/07/2012	THURSDAY	0605	SH 30	14.3	1 DRIVER
WINSLOW TWSP	07/11/2012	WEDNESDAY	1533	EXPRESSWAY	29.9	1 DRIVER, 1 PASSENGER
PENNSAUKEN TWSP	08/14/2012	TUESDAY	2308	SH 130	31.3	1 PEDESTRIAN
WINSLOW TWSP	08/21/2012	TUESDAY	2334	EXPRESSWAY	30.3	1 DRIVER
CHERRY HILL TWSP	09/07/2012	FRIDAY	0808	SH 70	3.7	1 PEDESTRIAN
GLOUCESTER TWSP	09/10/2012	MONDAY	2023	CR 688	2.9	1 DRIVER
HADDON HEIGHTS BORO	09/11/2012	TUESDAY	0639	CR 661	0.9	1 PEDALCYCLIST
GLOUCESTER TWSP	09/22/2012	SATURDAY	1725	SH 42	9.7	1 PASSENGER
CHERRY HILL TWSP	10/13/2012	SATURDAY	1158	PARK BLVD	0.0	1 DRIVER
CHERRY HILL TWSP	10/16/2012	TUESDAY	1622	SH 41	11.3	1 DRIVER
BERLIN BORO	10/27/2012	SATURDAY	1107	SH 30	17.9	1 PASSENGER
WINSLOW TWSP	11/07/2012	WEDNESDAY	1223	EXPRESSWAY	35.8	1 DRIVER
MAGNOLIA BORO	11/22/2012	THURSDAY	1852	SH 30	10.0	1 PEDESTRIAN

### CAPE MAY COUNTY

Municipality	Date	Day	Time	Road	MP	Persons Killed
MIDDLE TWSP	02/01/2012	WEDNESDAY	1753	SH 47	3.2	1 PEDESTRIAN
MIDDLE TWSP	04/28/2012	SATURDAY	2252	SH 47	3.5	1 PEDESTRIAN
LOWER TWSP	05/22/2012	TUESDAY	0250	CR 639	0.7	1 DRIVER
UPPER TWSP	07/23/2012	MONDAY	0314	PARKWAY	19.7	1 PASSENGER
MIDDLE TWSP	07/31/2012	TUESDAY	2117	CR 603	8.0	2 PEDESTRIANS
MIDDLE TWSP	08/08/2012	WEDNESDAY	1658	SH 147	1.2	1 DRIVER
WILDWOOD CREST BORO	08/20/2012	MONDAY	1007	OCEAN AVE	0.0	1 PEDESTRIAN
MIDDLE TWSP	09/06/2012	THURSDAY	1409	CR 657	6.3	1 DRIVER
LOWER TWSP	10/11/2012	THURSDAY	1403	SH 9	2.3	1 DRIVER
MIDDLE TWSP	11/07/2012	WEDNESDAY	1703	SH 47	12.9	1 DRIVER

### CUMBERLAND COUNTY

Municipality	Date	Day	Time	Road	MP	Persons Killed
FAIRFIELD TWSP	01/03/2012	TUESDAY	1324	130 N LUMMIS MILL RD	0.0	1 PASSENGER
VINELAND CITY	02/15/2012	WEDNESDAY	1318	E. CHESTNUT AVE	0.0	1 DRIVER, 1 PASSENGER
DEERFIELD TWSP	02/21/2012	TUESDAY	1907	CR 659	7.5	1 DRIVER
VINELAND CITY	03/24/2012	SATURDAY	2057	SH 47	46.3	1 PEDALCYCLIST
MAURICE RIVER TWSP	06/13/2012	WEDNESDAY	1601	CR 616	2.8	1 PEDESTRIAN
MAURICE RIVER TWSP	06/16/2012	SATURDAY	1105	SH 47	34.9	1 DRIVER
MILLVILLE CITY	07/04/2012	WEDNESDAY	2335	SH 49	35.6	1 PEDESTRIAN
LAWRENCE TWSP	07/26/2012	THURSDAY	2020	CR 553	13.2	1 DRIVER
DOWNE TWSP	08/12/2012	SUNDAY	1345	CR 553	8.4	1 DRIVER
VINELAND CITY	08/31/2012	FRIDAY	1620	BROWN RD	0.0	1 DRIVER
VINELAND CITY	09/16/2012	SUNDAY	2120	SH 47	46.0	1 PEDESTRIAN
VINELAND CITY	09/30/2012	SUNDAY	0228	CR 655	2.0	1 DRIVER
FAIRFIELD TWSP	10/26/2012	FRIDAY	2104	SH 49	29.1	1 DRIVER
VINELAND CITY	10/31/2012	WEDNESDAY	1421	SH 47	45.5	1 PEDESTRIAN
VINELAND CITY	11/21/2012	WEDNESDAY	1949	SH 47	43.5	1 PEDESTRIAN
MILLVILLE CITY	12/10/2012	MONDAY	1821	SH 47	40.7	1 PEDESTRIAN
LAWRENCE TWSP	12/12/2012	WEDNESDAY	0127	CR 626	4.3	1 DRIVER

### ESSEX COUNTY

Municipality	Date	Day	Time	Road	MP	Persons Killed
NEWARK CITY	01/09/2012	MONDAY	0543	NYE AVE	1.7	1 PEDESTRIAN
EAST ORANGE CITY	01/23/2012	MONDAY	0648	MAIN ST	0.0	1 PEDESTRIAN
EAST ORANGE CITY	02/05/2012	SUNDAY	2354	CR 509	12.4	1 PEDESTRIAN
NEWARK CITY	02/25/2012	SATURDAY	1930	SH 21	4.9	1 PASSENGER
NEWARK CITY	02/26/2012	SUNDAY	0235	CR 603	2.3	1 PEDALCYCLIST
IRVINGTON TOWN	03/23/2012	FRIDAY	1641	DURAND PL	0.0	1 DRIVER
NEWARK CITY	04/20/2012	FRIDAY	0020	I-280	13.0	1 PEDESTRIAN
NEWARK CITY	04/25/2012	WEDNESDAY	1549	WILSON AVE	1.2	1 PEDALCYCLIST
IRVINGTON TOWN	04/30/2012	MONDAY	0624	CR 603	1.0	1 PEDESTRIAN
NEWARK CITY	05/13/2012	SUNDAY	1950	CR 603	1.9	1 DRIVER
NEWARK CITY	05/18/2012	FRIDAY	0310	SH 1	49.9	1 DRIVER
NEWARK CITY	06/05/2012	TUESDAY	0909	CLINTON AVE	2.4	1 PEDESTRIAN
BLOOMFIELD BORO	06/06/2012	WEDNESDAY	2143	CR 509	14.9	1 PEDESTRIAN
WEST ORANGE TOWN	06/20/2012	WEDNESDAY	1625	I-280	6.8	1 PASSENGER
NEWARK CITY	06/28/2012	THURSDAY	1235	CR 509	11.7	1 PASSENGER
NEWARK CITY	06/29/2012	FRIDAY	2155	DAYTON ST	0.0	1 DRIVER
NEWARK CITY	07/04/2012	WEDNESDAY	0030	SH 21	0.0	1 DRIVER
BELLEVILLE TOWN	07/11/2012	WEDNESDAY	1251	CR 670	0.2	1 PEDESTRIAN

Municipality	Date	Day	Time	Road	MP	Persons Killed
BLOOMFIELD BORO	07/18/2012	WEDNESDAY	1047	BAY AVE	0.0	1 PEDESTRIAN
NEWARK CITY	07/28/2012	SATURDAY	0247	MULBERRY ST	0.0	1 PEDESTRIAN
VERONA BORO	07/31/2012	TUESDAY	2052	CR 506	4.6	1 PEDESTRIAN
NEWARK CITY	08/06/2012	MONDAY	1810	CR 508	10.5	1 PEDESTRIAN
IRVINGTON TOWN	08/19/2012	SUNDAY	2209	CR 605	0.5	1 PASSENGER
EAST ORANGE CITY	08/27/2012	MONDAY	0638	LINCOLN ST	0.0	1 PEDESTRIAN
NEWARK CITY	08/30/2012	THURSDAY	0507	TURNPIKE	104.9	1 DRIVER
NEWARK CITY	09/14/2012	FRIDAY	1031	CR 603	3.0	1 PASSENGER
IRVINGTON TOWN	09/17/2012	MONDAY	1934	ORANGE AVE	0.0	1 DRIVER
EAST ORANGE CITY	09/18/2012	TUESDAY	2346	I-280	11.4	1 PEDESTRIAN
BLOOMFIELD BORO	09/29/2012	SATURDAY	2315	BROUGHTON AVE	0.6	1 PASSENGER
BELLEVILLE TOWN	10/06/2012	SATURDAY	0158	CR 647	0.8	1 DRIVER
NEWARK CITY	10/08/2012	MONDAY	1905	SH 21	3.9	1 PEDESTRIAN
NEWARK CITY	10/22/2012	MONDAY	0213	TURNPIKE	106.6	1 PEDESTRIAN
MONTCLAIR TOWN	10/23/2012	TUESDAY	2032	CR 506	6.4	1 PEDESTRIAN
IRVINGTON TOWN	11/08/2012	THURSDAY	1509	CR 601	0.9	1 PEDESTRIAN
NEWARK CITY	11/09/2012	FRIDAY	0720	SUSSEX AVE	1.1	1 PEDESTRIAN
NEWARK CITY	11/10/2012	SATURDAY	2200	CR 508	10.5	1 PEDESTRIAN
IRVINGTON TOWN	11/11/2012	SUNDAY	0602	PARKWAY	143.8	1 DRIVER, 1 PASSENGER
NEWARK CITY	11/19/2012	MONDAY	1110	SOUTH 9TH ST	0.0	1 PASSENGER
BELLEVILLE TOWN	12/06/2012	THURSDAY	1647	CLARA MAASS DR	0.0	1 PEDESTRIAN
NUTLEY TOWN	12/21/2012	FRIDAY	2009	CR 645	3.2	1 PEDESTRIAN

### GLOUCESTER COUNTY

Municipality	Date	Day	Time	Road	MP	Persons Killed
MONROE TWSP	01/22/2012	SUNDAY	1733	SH 322	25.7	1 DRIVER
WASHINGTON TWSP	03/11/2012	SUNDAY	1739	SALINA RD	0.0	1 DRIVER
WEST DEPTFORD TWSP	03/16/2012	FRIDAY	0706	CR 551	23.6	1 DRIVER
WASHINGTON TWSP	04/14/2012	SATURDAY	2340	CR 658	1.3	1 PASSENGER
MONROE TWSP	04/15/2012	SUNDAY	1851	PINEY HOLLOW RD	0.0	1 DRIVER
FRANKLIN TWSP	05/20/2012	SUNDAY	0454	SH 40	28.6	1 DRIVER
DEPTFORD TWSP	06/12/2012	TUESDAY	0515	SH 42	11.9	1 DRIVER
WOOLWICH TWSP	06/29/2012	FRIDAY	1418	TURNPIKE	12.0	1 PASSENGER
FRANKLIN TWSP	07/03/2012	TUESDAY	1810	CR 612	0.2	1 DRIVER
FRANKLIN TWSP	07/07/2012	SATURDAY	0133	CR 538	16.0	1 PEDESTRIAN
WASHINGTON TWSP	07/07/2012	SATURDAY	1301	CR 654	5.6	2 PASSENGERS
WESTVILLE BORO	07/13/2012	FRIDAY	2150	I-295	25.7	1 DRIVER
SOUTH HARRISON TWSP	07/24/2012	TUESDAY	1156	SH 45	14.3	1 DRIVER
FRANKLIN TWSP	08/01/2012	WEDNESDAY	2038	CR 555	20.2	1 DRIVER
FRANKLIN TWSP	09/14/2012	FRIDAY	1848	SH 40	26.4	1 DRIVER
FRANKLIN TWSP	09/28/2012	FRIDAY	2051	STRAWBERRY AVE	0.0	1 PEDESTRIAN
HARRISON TWSP	10/15/2012	MONDAY	1550	WALTERS RD	0.0	1 DRIVER
MONROE TWSP	11/10/2012	SATURDAY	0849	CR 612	7.5	1 DRIVER
MANTUA TWSP	12/03/2012	MONDAY	1750	SH 45	22.1	1 PEDESTRIAN
ELK TWSP	12/14/2012	FRIDAY	0316	CR 609	2.5	1 DRIVER
WASHINGTON TWSP	12/14/2012	FRIDAY	1717	SH 42	5.7	1 PEDESTRIAN
GREENWICH TWSP	12/24/2012	MONDAY	2046	SH 44	2.6	1 DRIVER

### HUDSON COUNTY

Municipality	Date	Day	Time	Road	MP	Persons Killed
JERSEY CITY	01/13/2012	FRIDAY	1009	CR 622	0.3	1 PEDESTRIAN
JERSEY CITY	01/18/2012	WEDNESDAY	2124	GRAND ST	0.0	1 PASSENGER, 1 PEDESTRIAN
KEARNY TOWN	02/16/2012	THURSDAY	0409	SH 7	0.7	1 PEDALCYCLIST
GUTTENBERG TOWN	02/20/2012	MONDAY	1544	BELLEVUE AVE	0.0	1 PEDESTRIAN
WEST NEW YORK TOWN	03/03/2012	SATURDAY	2100	CR 693	0.1	1 PASSENGER
BAYONNE CITY	03/15/2012	THURSDAY	0755	AVE E	0.0	1 DRIVER
NORTH BERGEN TWSP	03/23/2012	FRIDAY	2343	SH 1	58.5	1 PEDESTRIAN
JERSEY CITY	03/27/2012	TUESDAY	0334	SH 1	56.1	1 DRIVER
KEARNY TOWN	04/25/2012	WEDNESDAY	1739	SH 7	2.5	1 DRIVER
JERSEY CITY	04/25/2012	WEDNESDAY	2344	78	6.8	1 DRIVER
KEARNY TOWN	05/05/2012	SATURDAY	2009	KEARNY AVE	0.0	1 PEDESTRIAN
JERSEY CITY	06/05/2012	TUESDAY	1759	TURNPIKE	5.9	1 DRIVER
NORTH BERGEN TWSP	07/04/2012	WEDNESDAY	0039	SH 1	58.4	1 PEDESTRIAN
JERSEY CITY	07/12/2012	THURSDAY	1619	78	64.9	1 DRIVER
HARRISON TOWN	07/22/2012	SUNDAY	1703	I-280	15.8	1 DRIVER
JERSEY CITY	08/01/2012	WEDNESDAY	0909	78	7.9	1 DRIVER
WEST NEW YORK TOWN	08/01/2012	WEDNESDAY	1420	PARK AVE	0.0	1 PEDESTRIAN
SECAUCUS TOWN	08/13/2012	MONDAY	0442	SH 3	9.7	1 PEDESTRIAN
KEARNY TOWN	08/22/2012	WEDNESDAY	0556	SH 1	0.8	1 DRIVER

Municipality	Date	Day	Time	Road	MP	Persons Killed
JERSEY CITY	10/31/2012	WEDNESDAY	1831	CR 663	0.3	1 PEDESTRIAN
KEARNY TOWN	11/03/2012	SATURDAY	1112	CR 659	1.7	1 PASSENGER
NORTH BERGEN TWSP	11/13/2012	TUESDAY	0407	CR 501	37.2	1 DRIVER
KEARNY TOWN	12/07/2012	FRIDAY	0035	TURNPIKE	107.7	2 DRIVERS

### HUNTERDON COUNTY

Municipality	Date	Day	Time	Road	MP	Persons Killed
CLINTON TWSP	01/02/2012	MONDAY	1604	I-78	17.5	2 PASSENGERS
BETHLEHEM TWSP	05/14/2012	MONDAY	0048	I-78	8.2	1 DRIVER
READINGTON TWSP	05/19/2012	SATURDAY	0621	SH 202	15.2	1 DRIVER
STOCKTON BORO	06/01/2012	FRIDAY	1946	CR 523	0.0	1 PEDALCYCLIST
RARITAN TWSP	11/05/2012	MONDAY	0853	CR 617	2.8	1 PEDESTRIAN

### MERCER COUNTY

Municipality	Date	Day	Time	Road	MP	Persons Killed
EWING TWSP	01/11/2012	WEDNESDAY	1524	SH 31	1.5	1 PEDESTRIAN
HAMILTON TWSP	01/13/2012	FRIDAY	2030	CR 620	0.5	1 PEDESTRIAN
TRENTON	01/31/2012	TUESDAY	1832	SH 129	2.1	1 PEDESTRIAN
TRENTON	02/16/2012	THURSDAY	1109	SH 1	0.0	1 PEDESTRIAN
EWING TWSP	03/16/2012	FRIDAY	0205	CR 643	2.8	1 DRIVER
HAMILTON TWSP	03/16/2012	FRIDAY	0643	CYPRESS LN	0.0	1 PEDESTRIAN
EAST WINDSOR TWSP	04/12/2012	THURSDAY	1311	SH 33	15.2	1 DRIVER
HAMILTON TWSP	04/26/2012	THURSDAY	2309	CR 614	0.3	1 PEDESTRIAN
TRENTON	05/03/2012	THURSDAY	0055	SOUTH CLINTON AVE	2.9	1 DRIVER
LAWRENCE TWSP	05/07/2012	MONDAY	0938	SH 1	7.3	1 PEDALCYCLIST
EWING TWSP	07/20/2012	FRIDAY	1008	TURNPIKE	0.5	1 DRIVER
HAMILTON TWSP	08/07/2012	TUESDAY	1106	REDWOOD AVE	0.0	1 PEDESTRIAN
LAWRENCE TWSP	08/23/2012	THURSDAY	2341	SH 1	6.0	1 PEDESTRIAN
EAST WINDSOR TWSP	09/11/2012	TUESDAY	0027	TURNPIKE	68.0	1 DRIVER
LAWRENCE TWSP	10/01/2012	MONDAY	0839	TURNPIKE	8.2	1 DRIVER
ROBBINSVILLE TWSP	10/03/2012	WEDNESDAY	0945	TURNPIKE	60.7	1 DRIVER
HAMILTON TWSP	10/12/2012	FRIDAY	0648	SOUTH CLINTON AVE	0.4	1 PEDESTRIAN
WEST WINDSOR TWP	10/21/2012	SUNDAY	0704	SH 1	10.3	1 DRIVER
TRENTON	10/26/2012	FRIDAY	1726	WEST HANOVER ST	0.0	1 DRIVER
LAWRENCE TWSP	11/16/2012	FRIDAY	1747	SH 206	47.0	1 PEDESTRIAN
LAWRENCE TWSP	12/03/2012	MONDAY	1135	SH 1	8.0	1 PEDESTRIAN
EWING TWSP	12/08/2012	SATURDAY	0036	TURNPIKE	0.5	1 DRIVER
TRENTON	12/25/2012	TUESDAY	0649	SH 29	3.0	1 DRIVER

### MIDDLESEX COUNTY

Municipality	Date	Day	Time	Road	MP	Persons Killed
EDISON TWSP	01/01/2012	SUNDAY	0621	TURNPIKE	85.7	1 DRIVER
WOODBIDGE TWSP	01/12/2012	THURSDAY	0305	SH 1	34.3	1 PEDESTRIAN
PERTH AMBOY CITY	01/14/2012	SATURDAY	2116	SH 184	0.9	1 PEDESTRIAN
PISCATAWAY TWSP	01/25/2012	WEDNESDAY	0652	CR 665	0.8	1 DRIVER
NEW BRUNSWICK CITY	01/25/2012	WEDNESDAY	2253	SH 171	1.5	1 PEDALCYCLIST
CARTERET BORO	02/04/2012	SATURDAY	1633	TURNPIKE	95.9	1 DRIVER, 1 PASSENGER
MONROE TWSP	02/10/2012	FRIDAY	1425	CR 625	1.0	1 DRIVER
OLD BRIDGE TWSP	02/14/2012	TUESDAY	0601	SH 35	45.6	1 PEDESTRIAN
DUNELLEN BORO	02/24/2012	FRIDAY	1052	SH 28	11.9	1 PEDESTRIAN
WOODBIDGE TWSP	02/25/2012	SATURDAY	1355	PARKWAY	130.9	1 DRIVER
WOODBIDGE TWSP	02/27/2012	MONDAY	1920	SH 35	57.7	1 DRIVER
CRANBURY TWSP	03/08/2012	THURSDAY	1921	SH 130	71.3	1 DRIVER
WOODBIDGE TWSP	03/16/2012	FRIDAY	0134	PARKWAY	130.7	1 DRIVER
EDISON TWSP	03/21/2012	WEDNESDAY	2017	SH 27	19.6	1 PEDESTRIAN
WOODBIDGE TWSP	03/22/2012	THURSDAY	1543	CR 611	4.1	1 DRIVER
NEW BRUNSWICK CITY	03/30/2012	FRIDAY	1906	SOMERSET ST	0.0	1 PEDESTRIAN
SOUTH BRUNSWICK TWS	03/31/2012	SATURDAY	0341	CR 614	5.6	1 PASSENGER
EAST BRUNSWICK TWSP	04/02/2012	MONDAY	1334	TURNPIKE	81.4	1 DRIVER
NEW BRUNSWICK CITY	04/14/2012	SATURDAY	0038	CR 693	0.8	1 DRIVER
OLD BRIDGE TWSP	04/25/2012	WEDNESDAY	0727	SH 18	31.8	1 DRIVER
SOUTH BRUNSWICK TWS	04/30/2012	MONDAY	1145	TURNPIKE	75.2	1 PASSENGER
SOUTH BRUNSWICK TWS	05/03/2012	THURSDAY	0402	SH 1	19.9	1 PASSENGER
NORTH BRUNSWICK TWS	05/15/2012	TUESDAY	2102	SH 1	23.8	1 DRIVER
WOODBIDGE TWSP	05/28/2012	MONDAY	1522	SH 440	1.8	1 DRIVER
SAYREVILLE BORO	06/11/2012	MONDAY	1338	CR 675	1.8	1 DRIVER
NEW BRUNSWICK CITY	06/15/2012	FRIDAY	2311	SH 26	2.3	1 PEDESTRIAN
SOUTH AMBOY CITY	06/29/2012	FRIDAY	2126	SH 35	49.3	1 PEDESTRIAN

Municipality	Date	Day	Time	Road	MP	Persons Killed
OLD BRIDGE TWSP	07/03/2012	TUESDAY	2107	CR 689	4.4	1 PEDESTRIAN
MONROE TWSP	07/04/2012	WEDNESDAY	1651	NORTH STATE HOME RD	0.0	1 DRIVER
SAYREVILLE BORO	07/14/2012	SATURDAY	2303	PARKWAY	126.3	1 PASSENGER
NORTH BRUNSWICK TWS	07/15/2012	SUNDAY	1947	NASSAU ST	0.2	1 PEDESTRIAN
OLD BRIDGE TWSP	07/29/2012	SUNDAY	0115	SH 34	25.4	1 PEDESTRIAN
NORTH BRUNSWICK TWS	08/11/2012	SATURDAY	0417	SH 130	82.3	1 DRIVER
NEW BRUNSWICK CITY	08/12/2012	SUNDAY	1210	HANDY ST	0.0	1 PEDESTRIAN
EAST BRUNSWICK TWSP	08/20/2012	MONDAY	1325	TURNPIKE	80.0	1 PEDESTRIAN
SOUTH BRUNSWICK TWS	08/28/2012	TUESDAY	1014	CR 522	1.8	1 DRIVER
EAST BRUNSWICK TWSP	09/04/2012	TUESDAY	2250	CR 535	21.0	1 DRIVER
OLD BRIDGE TWSP	09/14/2012	FRIDAY	0834	TICETOWN RD	0.0	1 PEDESTRIAN
EAST BRUNSWICK TWSP	09/15/2012	SATURDAY	1230	DUNHAMS CORNER RD	2.5	2 PEDESTRIANS
OLD BRIDGE TWSP	09/15/2012	SATURDAY	1856	PARKWAY	122.0	1 DRIVER
NORTH BRUNSWICK TWS	09/19/2012	WEDNESDAY	1427	SH 130	80.7	1 PASSENGER
SAYREVILLE BORO	09/22/2012	SATURDAY	0031	SH 9	128.9	1 DRIVER, 1 PASSENGER
SOUTH BRUNSWICK TWS	09/24/2012	MONDAY	0610	CR 522	5.2	1 DRIVER
NEW BRUNSWICK CITY	09/28/2012	FRIDAY	1323	PLUM ST	0.0	1 PEDESTRIAN
CRANBURY TWSP	09/28/2012	FRIDAY	2021	SH 130	70.7	1 PASSENGER
EAST BRUNSWICK TWSP	10/01/2012	MONDAY	1444	CR 617	1.6	1 DRIVER, 1 PASSENGER
MONROE TWSP	10/14/2012	SUNDAY	1532	CR 612	1.0	1 PASSENGER
SOUTH BRUNSWICK TWS	10/23/2012	TUESDAY	2020	SH 27	9.3	1 DRIVER
NEW BRUNSWICK CITY	10/31/2012	WEDNESDAY	1624	SH 18	41.3	1 PASSENGER
OLD BRIDGE TWSP	11/08/2012	THURSDAY	0723	CR 689	3.6	1 DRIVER
WOODBIDGE TWSP	11/14/2012	WEDNESDAY	1110	SH 9	136.1	1 DRIVER
EDISON TWSP	11/15/2012	THURSDAY	1558	TURNPIKE	88.5	1 DRIVER
NORTH BRUNSWICK TWS	11/15/2012	THURSDAY	2310	SH 1	21.1	1 DRIVER
OLD BRIDGE TWSP	11/16/2012	FRIDAY	2003	CR 527	37.6	1 DRIVER
METUCHEN BORO	11/25/2012	SUNDAY	0725	LINDEN AVE	0.0	1 DRIVER
SAYREVILLE BORO	11/29/2012	THURSDAY	0619	PARKWAY	121.8	1 DRIVER
CARTERET BORO	12/09/2012	SUNDAY	0500	TURNPIKE	95.2	1 PEDESTRIAN
PERTH AMBOY CITY	12/16/2012	SUNDAY	0425	INDUSTRIAL AVE	0.0	2 PASSENGERS
NORTH BRUNSWICK TWS	12/20/2012	THURSDAY	1802	SH 130	80.1	1 PEDESTRIAN
WOODBIDGE TWSP	12/24/2012	MONDAY	1908	SH 440	1.7	1 DRIVER

### MONMOUTH COUNTY

Municipality	Date	Day	Time	Road	MP	Persons Killed
MIDDLETOWN TWSP	01/04/2012	WEDNESDAY	1748	SH 36	16.3	1 PEDESTRIAN
TINTON FALLS BORO	01/09/2012	MONDAY	0317	PARKWAY	102.1	1 DRIVER
FREEHOLD TWSP	01/09/2012	MONDAY	2250	SH 9	115.3	1 PEDESTRIAN
HOWELL TWSP	01/13/2012	FRIDAY	2243	SH 9	110.4	1 DRIVER
MIDDLETOWN TWSP	01/17/2012	TUESDAY	1051	SH 36	18.0	1 DRIVER
WALL TWSP	01/20/2012	FRIDAY	0958	PARKWAY	101.3	1 DRIVER
MIDDLETOWN TWSP	01/28/2012	SATURDAY	2346	CR 12	3.4	1 DRIVER
MANALAPAN TWSP	03/03/2012	SATURDAY	2318	SH 33	0.3	1 PASSENGER
BRADLEY BEACH BORO	03/14/2012	WEDNESDAY	1542	CR 18	4.7	1 DRIVER
LITTLE SILVER BORO	04/06/2012	FRIDAY	0315	CR 34	0.9	1 PEDESTRIAN
WEST LONG BRANCH BO	04/08/2012	SUNDAY	0212	CR 32	1.5	1 DRIVER
HOWELL TWSP	04/12/2012	THURSDAY	1840	SH 34	9.1	1 DRIVER
MILLSTONE TWSP	06/01/2012	FRIDAY	1821	MILLSTONE RD	3.6	1 DRIVER
FREEHOLD TWSP	06/05/2012	TUESDAY	1409	CR 23	0.5	1 DRIVER
FREEHOLD TWSP	06/24/2012	SUNDAY	1327	CR 524	23.1	1 DRIVER
BELMAR BORO	07/04/2012	WEDNESDAY	0246	SH 35	21.5	1 DRIVER
WALL TWSP	07/27/2012	FRIDAY	0157	PARKWAY	97.1	1 PEDESTRIAN
MARLBORO TWSP	08/23/2012	THURSDAY	2243	SH 9	120.5	1 PEDESTRIAN
MANALAPAN TWSP	09/05/2012	WEDNESDAY	1626	CR 527	23.3	1 DRIVER
MARLBORO TWSP	09/12/2012	WEDNESDAY	2108	SH 34	19.9	1 DRIVER
TINTON FALLS BORO	09/12/2012	WEDNESDAY	2231	CR 547	21.3	1 DRIVER, 1 PASSENGER
MIDDLETOWN TWSP	09/17/2012	MONDAY	0735	MAIN ST	0.0	1 PEDESTRIAN
MILLSTONE TWSP	09/26/2012	WEDNESDAY	1911	CR 537	43.5	1 DRIVER
HOLMDEL TWSP	09/30/2012	SUNDAY	1009	CR 52	3.0	1 DRIVER, 1 PASSENGER
HOWELL TWSP	10/20/2012	SATURDAY	1540	CR 547	11.4	1 DRIVER
UPPER FREEHOLD TWSP	10/21/2012	SUNDAY	1335	CR 524	12.4	1 DRIVER
MIDDLETOWN TWSP	10/21/2012	SUNDAY	2006	SH 36	18.8	1 PEDESTRIAN
FREEHOLD TWSP	10/24/2012	WEDNESDAY	1811	CR 537	11.0	1 DRIVER
WALL TWSP	11/03/2012	SATURDAY	1259	SH 34	6.4	1 DRIVER
FREEHOLD TWSP	11/18/2012	SUNDAY	1751	SH 33	26.5	1 PEDESTRIAN
HAZLET BORO	11/19/2012	MONDAY	0018	SH 36	20.8	1 DRIVER
WEST LONG BRANCH BO	12/14/2012	FRIDAY	2230	SH 36	2.8	1 PEDESTRIAN
WALL TWSP	12/20/2012	THURSDAY	2317	PARKWAY	98.4	1 PEDESTRIAN
HAZLET BORO	12/24/2012	MONDAY	0800	SH 35	41.9	1 DRIVER

### MORRIS COUNTY

Municipality	Date	Day	Time	Road	MP	Persons Killed
PARSIPPANY-TROY HIL	01/03/2012	TUESDAY	0919	I-80	45.4	1 DRIVER
PEQUANNOCK TWSP	01/20/2012	FRIDAY	1736	CR 504	5.0	1 DRIVER
MOUNTAIN LAKES BORO	02/13/2012	MONDAY	0904	CR 618	1.9	1 PASSENGER
ROXBURY TWSP	02/17/2012	FRIDAY	1019	SH 46	31.6	1 DRIVER
PARSIPPANY-TROY HIL	03/15/2012	THURSDAY	0151	I-80	47.2	1 DRIVER
PEQUANNOCK TWSP	03/18/2012	SUNDAY	0109	SH 23	12.0	1 DRIVER
PARSIPPANY-TROY HIL	04/14/2012	SATURDAY	0644	I-280	1.7	1 DRIVER
EAST HANOVER TWSP	05/05/2012	SATURDAY	1347	CR 632	1.9	1 PEDESTRIAN
PARSIPPANY-TROY HIL	06/13/2012	WEDNESDAY	2329	UPPER RAINBOW TR	0.0	1 PASSENGER
MOUNT OLIVE TWSP	06/19/2012	TUESDAY	2048	WOLFE RD	0.0	1 DRIVER, 1 PASSENGER
MOUNT OLIVE TWSP	07/08/2012	SUNDAY	2036	SH 206	90.7	1 PASSENGER
ROCKAWAY TWSP	08/05/2012	SUNDAY	0103	CR 513	56.1	1 DRIVER, 1 PASSENGER
ROCKAWAY TWSP	09/05/2012	WEDNESDAY	2054	I-80	34.4	1 PEDESTRIAN
PARSIPPANY-TROY HIL	09/13/2012	THURSDAY	1908	SH 10	9.6	1 DRIVER
PARSIPPANY-TROY HIL	09/14/2012	FRIDAY	1701	SH 46	47.7	1 DRIVER
MOUNT OLIVE TWSP	10/11/2012	THURSDAY	0612	SH 46	28.3	1 DRIVER
MONTVILLE TWSP	10/14/2012	SUNDAY	1345	JOHN HENRY DR	0.0	1 PASSENGER
JEFFERSON TWSP	10/28/2012	SUNDAY	1528	SH 181	0.6	1 DRIVER
MENDHAM TWSP	10/29/2012	MONDAY	1938	NORTH GATE RD	0.0	1 DRIVER, 1 PASSENGER
HARDING TWSP	11/02/2012	FRIDAY	2013	I-287	31.8	1 DRIVER
FLORHAM PARK BORO	11/07/2012	WEDNESDAY	0952	BROOK LAKE RD	0.0	1 DRIVER
HANOVER TWSP	11/09/2012	FRIDAY	1103	SH 24	0.5	1 DRIVER
PARSIPPANY-TROY HIL	12/02/2012	SUNDAY	0046	I-80	40.7	1 DRIVER
JEFFERSON TWSP	12/06/2012	THURSDAY	1727	SH 15	5.9	1 PEDESTRIAN
ROCKAWAY TWSP	12/16/2012	SUNDAY	2130	CR 513	48.4	1 PASSENGER
CHATHAM BORO	12/20/2012	THURSDAY	1523	CR 607	0.6	1 DRIVER
PARSIPPANY-TROY HIL	12/22/2012	SATURDAY	0154	SH 10	9.3	1 PEDESTRIAN

### OCEAN COUNTY

Municipality	Date	Day	Time	Road	MP	Persons Killed
LAKEWOOD TWSP	01/07/2012	SATURDAY	0857	CR 528	33.6	1 PASSENGER
LAKEWOOD TWSP	02/11/2012	SATURDAY	1502	CR 528	31.1	1 DRIVER, 1 PASSENGER
BARNEGAT TWSP	03/04/2012	SUNDAY	0142	PARKWAY	68.2	1 DRIVER
TOMS RIVER	03/11/2012	SUNDAY	2301	CR 549	0.6	1 DRIVER
TOMS RIVER	03/19/2012	MONDAY	2255	SH 9	98.6	1 PEDESTRIAN
OCEAN TWSP	03/30/2012	FRIDAY	1247	CR 532	31.0	1 DRIVER
STAFFORD TWSP	04/02/2012	MONDAY	0456	PARKWAY	61.8	1 DRIVER
LAKEWOOD TWSP	04/04/2012	WEDNESDAY	0715	CR 623	7.9	1 DRIVER
TOMS RIVER	04/05/2012	THURSDAY	1426	CR 549	2.6	1 DRIVER
JACKSON TWSP	04/17/2012	TUESDAY	1406	CR 636	2.9	1 DRIVER
MANCHESTER TWSP	04/18/2012	WEDNESDAY	0108	SH 70	45.8	1 DRIVER
STAFFORD TWSP	04/20/2012	FRIDAY	2238	MERMAID DR	0.0	1 PASSENGER
BRICK TWSP	05/03/2012	THURSDAY	2043	SH 70	57.1	1 PEDESTRIAN
EAGLESWOOD TWSP	05/18/2012	FRIDAY	1835	SH 9	65.5	1 DRIVER
BRICK TWSP	05/31/2012	THURSDAY	2336	CR 549	6.2	1 PEDESTRIAN
TOMS RIVER	06/02/2012	SATURDAY	0703	PARKWAY	86.2	1 DRIVER
PLUMSTED TWSP	06/03/2012	SUNDAY	1608	CR 537	36.0	1 DRIVER
BRICK TWSP	06/04/2012	MONDAY	1737	CLUBHOUSE RD	0.0	1 DRIVER
LACEY TWSP	06/16/2012	SATURDAY	1316	NAUTILUS BLVD	0.0	1 DRIVER
OCEAN TWSP	06/24/2012	SUNDAY	1930	CR 613	0.6	1 PEDALCYCLIST
OCEAN TWSP	06/26/2012	TUESDAY	1730	SH 9	77.9	1 DRIVER
LACEY TWSP	07/15/2012	SUNDAY	1756	DEERHEAD LAKE DR	0.0	1 PASSENGER
POINT PLEASANT BORO	07/15/2012	SUNDAY	2135	SH 13	0.4	1 DRIVER
BRICK TWSP	07/17/2012	TUESDAY	0834	PARKWAY	92.0	1 DRIVER
SOUTH TOMS RIVER BO	07/19/2012	THURSDAY	1750	SH 166	0.6	1 PEDESTRIAN
BRICK TWSP	08/15/2012	WEDNESDAY	0925	SH 88	6.8	1 PEDALCYCLIST
LACEY TWSP	09/02/2012	SUNDAY	0154	PARKWAY	76.7	1 DRIVER
JACKSON TWSP	09/05/2012	WEDNESDAY	0738	CR 571	13.3	1 DRIVER
MANCHESTER TWSP	09/18/2012	TUESDAY	1650	SH 70	38.6	1 DRIVER
LAKEWOOD TWSP	09/20/2012	THURSDAY	0529	CR 526	32.4	1 PEDESTRIAN
BARNEGAT TWSP	09/26/2012	WEDNESDAY	1415	SH 9	75.1	1 DRIVER
JACKSON TWSP	10/09/2012	TUESDAY	1716	CR 547	3.9	1 DRIVER, 1 PASSENGER
JACKSON TWSP	10/17/2012	WEDNESDAY	1938	CR 641	3.0	1 PEDALCYCLIST
LITTLE EGG HARBOR T	10/20/2012	SATURDAY	2359	CR 602	0.1	1 DRIVER
JACKSON TWSP	10/23/2012	TUESDAY	0523	CR 636	0.9	1 DRIVER
TOMS RIVER	10/24/2012	WEDNESDAY	1315	SH 70	49.2	1 DRIVER
TOMS RIVER	10/26/2012	FRIDAY	2027	PARKWAY	86.1	1 DRIVER
PLUMSTED TWSP	11/02/2012	FRIDAY	1400	BUCK SWAMP RD	0.0	1 DRIVER
JACKSON TWSP	11/06/2012	TUESDAY	1616	CR 571	20.4	1 PEDALCYCLIST
EAGLESWOOD TWSP	11/09/2012	FRIDAY	1047	SH 9	65.9	1 DRIVER

Municipality	Date	Day	Time	Road	MP	Persons Killed
LAKEWOOD TWSP	11/18/2012	SUNDAY	1437	PARKWAY	87.9	1 DRIVER
BRICK TWSP	11/24/2012	SATURDAY	0151	CHERRY QUAY RD	0.0	1 DRIVER, 1 PASSENGER
MANCHESTER TWSP	11/24/2012	SATURDAY	0424	CR 571	11.1	1 DRIVER
TOMS RIVER	12/07/2012	FRIDAY	1758	CR 549	3.3	1 PEDESTRIAN
BARNEGAT TWSP	12/08/2012	SATURDAY	1928	CR 8	2.0	1 PEDESTRIAN
MANCHESTER TWSP	12/10/2012	MONDAY	1358	CR 530	20.9	1 DRIVER
JACKSON TWSP	12/17/2012	MONDAY	0706	CR 571	19.2	1 PEDESTRIAN
BRICK TWSP	12/18/2012	TUESDAY	1837	CR 549	2.9	1 DRIVER
BRICK TWSP	12/23/2012	SUNDAY	1937	CR 549	8.4	1 PEDESTRIAN
BRICK TWSP	12/28/2012	FRIDAY	0820	CR 630	1.9	1 PEDESTRIAN

### PASSAIC COUNTY

Municipality	Date	Day	Time	Road	MP	Persons Killed
PATERSON CITY	01/22/2012	SUNDAY	0308	SH 20	1.2	1 PEDESTRIAN
CLIFTON CITY	01/28/2012	SATURDAY	0516	PARKWAY	156.0	1 DRIVER
WAYNE TWSP	02/04/2012	SATURDAY	0228	CR 668	0.7	1 PASSENGER
WEST MILFORD TWSP	02/13/2012	MONDAY	0641	CR 511	33.5	1 DRIVER
PATERSON CITY	02/26/2012	SUNDAY	0324	21ST AVE	0.0	1 PASSENGER
CLIFTON CITY	03/17/2012	SATURDAY	0357	SH 46	62.0	2 PEDESTRIANS
TOTOWA BORO	04/07/2012	SATURDAY	0605	I-80	54.7	1 DRIVER
CLIFTON CITY	04/15/2012	SUNDAY	1325	BRIGHTON RD	0.0	1 DRIVER
PATERSON CITY	04/17/2012	TUESDAY	1843	NORTH 1ST ST	0.0	1 DRIVER
TOTOWA BORO	04/29/2012	SUNDAY	0556	I-80	55.9	1 PASSENGER
CLIFTON CITY	05/14/2012	MONDAY	2339	SH 161	0.6	1 DRIVER
WAYNE TWSP	06/02/2012	SATURDAY	1407	SH 23	5.5	1 DRIVER
PATERSON CITY	06/10/2012	SUNDAY	2142	ATLANTIC ST	0.0	1 DRIVER
WAYNE TWSP	06/21/2012	THURSDAY	0115	SH 46	56.6	1 PEDESTRIAN
WEST MILFORD TWSP	07/11/2012	WEDNESDAY	2349	SH 23	22.4	1 PASSENGER
PATERSON CITY	07/16/2012	MONDAY	2243	I-80	59.8	1 PEDESTRIAN
PATERSON CITY	08/10/2012	FRIDAY	1933	CR 648	1.6	1 DRIVER
WAYNE TWSP	08/11/2012	SATURDAY	2104	SH 46	55.5	1 PEDESTRIAN
CLIFTON CITY	08/17/2012	FRIDAY	0111	SH 46	63.5	1 DRIVER
PATERSON CITY	08/25/2012	SATURDAY	2211	MADISON AVE	0.0	1 PEDESTRIAN
CLIFTON CITY	09/16/2012	SUNDAY	1936	CR 622	0.8	1 PEDESTRIAN
CLIFTON CITY	09/17/2012	MONDAY	0505	SH 3	4.1	1 PEDESTRIAN
WAYNE TWSP	09/19/2012	WEDNESDAY	2055	CR 681	2.5	1 DRIVER
PASSAIC CITY	09/27/2012	THURSDAY	0632	CR 601	1.2	1 PEDESTRIAN
PATERSON CITY	10/06/2012	SATURDAY	0454	21ST AVE	0.0	1 DRIVER
CLIFTON CITY	10/28/2012	SUNDAY	1951	SH 3	4.5	1 DRIVER
WEST MILFORD TWSP	11/09/2012	FRIDAY	1250	CR 693	6.4	1 DRIVER
LITTLE FALLS TWSP	11/10/2012	SATURDAY	2356	MEADOW DR	0.0	1 PASSENGER
PATERSON CITY	11/11/2012	SUNDAY	0547	I-80	57.8	1 DRIVER
WOODLAND PARK BORO	11/20/2012	TUESDAY	0821	I-80	56.8	1 DRIVER

### SALEM COUNTY

Municipality	Date	Day	Time	Road	MP	Persons Killed
PILESGROVE TWSP	01/04/2012	WEDNESDAY	1917	FORSYTHIA LN	0.0	1 DRIVER
PITTSBORO TWSP	04/14/2012	SATURDAY	1951	LOWER MILL RD	0.0	1 DRIVER
PITTSBORO TWSP	05/01/2012	TUESDAY	1829	CR 540	31.1	1 DRIVER
PITTSBORO TWSP	05/09/2012	WEDNESDAY	0707	SH 40	21.5	1 DRIVER, 1 PASSENGER
PENNSVILLE TWSP	05/27/2012	SUNDAY	2237	NOTTINGHAM RD	0.0	1 PEDESTRIAN
PILESGROVE TWSP	07/12/2012	THURSDAY	1743	CR 617	2.3	1 DRIVER
QUINTON TWSP	07/14/2012	SATURDAY	1523	SH 49	18.7	1 DRIVER
MANNINGTON TWSP	09/07/2012	FRIDAY	1932	CR 540	2.8	1 DRIVER

### SOMERSET COUNTY

Municipality	Date	Day	Time	Road	MP	Persons Killed
BERNARDSVILLE BORO	01/18/2012	WEDNESDAY	1004	SH 202	34.4	1 DRIVER
BERNARDS TWSP	02/25/2012	SATURDAY	2159	I-78	33.8	1 PASSENGER
BRIDGEWATER TWSP	03/12/2012	MONDAY	1042	EDGEWATER AVE	0.0	1 DRIVER
FRANKLIN TWSP	05/08/2012	TUESDAY	1743	SH 27	4.7	1 DRIVER, 1 PASSENGER
FRANKLIN TWSP	05/15/2012	TUESDAY	1121	HELLER PARK LN	0.0	1 PASSENGER
FRANKLIN TWSP	05/16/2012	WEDNESDAY	1510	CR 514	22.6	1 PEDESTRIAN
HILLSBOROUGH TWSP	05/17/2012	THURSDAY	1631	CR 514	13.3	1 DRIVER
RARITAN BORO	05/23/2012	WEDNESDAY	1501	SH 206	70.6	1 DRIVER
GREEN BROOK TWSP	07/22/2012	SUNDAY	0708	CR 634	1.0	1 DRIVER
BEDMINSTER TWSP	07/25/2012	WEDNESDAY	0530	I-78	29.7	1 DRIVER
FRANKLIN TWSP	08/12/2012	SUNDAY	2134	CR 527	49.6	1 PEDESTRIAN



Municipality	Date	Day	Time	Road	MP	Persons Killed
SOMERVILLE BORO	10/09/2012	TUESDAY	1832	VETERANS MEMORIAL DR	0.2	1 PEDESTRIAN
BERNARDS TWSP	11/22/2012	THURSDAY	0233	I-78	33.8	2 PASSENGERS
MONTGOMERY TWSP	12/22/2012	SATURDAY	2325	SH 206	58.8	1 DRIVER
NORTH PLAINFIELD BO	12/23/2012	SUNDAY	2338	SH 22	45.2	1 PEDESTRIAN
BRIDGEWATER TWSP	12/31/2012	MONDAY	0544	SH 22	36.0	1 DRIVER

### SUSSEX COUNTY

Municipality	Date	Day	Time	Road	MP	Persons Killed
VERNON TWSP	01/02/2012	MONDAY	2302	CR 515	3.2	1 DRIVER
LAFAYETTE TWSP	01/11/2012	WEDNESDAY	1504	SH 15	18.1	1 DRIVER
BYRAM TWSP	03/02/2012	FRIDAY	0350	SH 206	99.1	1 PEDESTRIAN
SPARTA TWSP	03/16/2012	FRIDAY	0114	LAMBERT DR	0.0	1 DRIVER
LAFAYETTE TWSP	04/20/2012	FRIDAY	1916	SH 15	18.7	1 DRIVER
HARDYSTON TWSP	05/13/2012	SUNDAY	1447	SH 94	32.9	1 DRIVER
MONTAGUE TWSP	05/26/2012	SATURDAY	1620	SH 23	49.0	1 DRIVER
WANTAGE TWSP	07/21/2012	SATURDAY	0940	SH 23	45.3	1 DRIVER
STILLWATER TWSP	09/05/2012	WEDNESDAY	2014	CR 521	14.5	1 DRIVER
HARDYSTON TWSP	10/06/2012	SATURDAY	0315	SH 94	31.3	1 PASSENGER
BRANCHVILLE BOR	10/22/2012	MONDAY	0311	SH 206	117.0	1 DRIVER, 1 PASSENGER
BRANCHVILLE BOR	11/18/2012	SUNDAY	1235	SH 206	116.5	1 DRIVER
VERNON TWSP	12/01/2012	SATURDAY	0220	MAPLE GRANGE RD	0.0	1 DRIVER
SPARTA TWSP	12/07/2012	FRIDAY	0639	CR 517	33.9	1 PEDESTRIAN

### UNION COUNTY

Municipality	Date	Day	Time	Road	MP	Persons Killed
ELIZABETH CITY	01/24/2012	TUESDAY	0139	SH 1	43.0	1 DRIVER
WESTFIELD TOWN	01/25/2012	WEDNESDAY	1805	CR 610	2.4	1 PEDESTRIAN
ROSELLE BORO	02/16/2012	THURSDAY	1844	EAST 3RD AVE	0.0	1 PEDESTRIAN
UNION TWSP	02/19/2012	SUNDAY	2126	MILLTON AVE	0.0	1 PEDESTRIAN
ELIZABETH CITY	03/08/2012	THURSDAY	1658	TURNPIKE	99.3	1 PASSENGER
UNION TWSP	03/13/2012	TUESDAY	2159	LIBERTY AVE	0.0	1 PEDESTRIAN
ELIZABETH CITY	03/24/2012	SATURDAY	0038	THIRD ST	0.0	1 DRIVER
ELIZABETH CITY	04/14/2012	SATURDAY	0227	DIVISION ST	0.0	1 DRIVER
SCOTCH PLAINS TWSP	04/26/2012	THURSDAY	2054	SH 22	48.2	1 PEDESTRIAN
ELIZABETH CITY	04/28/2012	SATURDAY	1429	NEWARK AVE	0.0	1 PEDESTRIAN
ELIZABETH CITY	05/15/2012	TUESDAY	1658	DIVISION ST	0.0	1 DRIVER
ELIZABETH CITY	05/29/2012	TUESDAY	1619	TURNPIKE	99.4	1 DRIVER
ELIZABETH CITY	06/04/2012	MONDAY	2259	SPRING ST	0.0	1 DRIVER
ELIZABETH CITY	06/10/2012	SUNDAY	2340	SPRING ST	0.0	1 PASSENGER
HILLSIDE TWSP	06/11/2012	MONDAY	1711	SH 22	57.9	1 DRIVER
BERKELEY HEIGHTS TW	06/16/2012	SATURDAY	1402	PARK AVE	0.0	1 PASSENGER
HILLSIDE TWSP	06/16/2012	SATURDAY	1607	I-78	54.2	1 DRIVER
ELIZABETH CITY	07/11/2012	WEDNESDAY	0025	ELIZABETH AVE	0.0	1 PEDALCYCLIST
WESTFIELD TOWN	08/10/2012	FRIDAY	1118	LAMBERST MILL RD	0.0	1 DRIVER
ELIZABETH CITY	08/19/2012	SUNDAY	1809	MAGIE AVE	0.0	1 PASSENGER
LINDEN CITY	08/20/2012	MONDAY	2056	SH 27	31.8	1 PEDESTRIAN
ELIZABETH CITY	10/31/2012	WEDNESDAY	1848	SH 1	45.4	1 PEDESTRIAN
MOUNTAINSIDE BORO	11/19/2012	MONDAY	1948	SH 22	51.1	1 DRIVER
CRANFORD TWSP	11/29/2012	THURSDAY	0847	WALNUT AVE	0.0	1 DRIVER
ELIZABETH CITY	12/08/2012	SATURDAY	0325	SPRING ST	0.0	1 PEDESTRIAN
UNION TWSP	12/10/2012	MONDAY	1128	I-78	52.0	1 DRIVER
HILLSIDE TWSP	12/14/2012	FRIDAY	0259	SH 22	58.1	1 DRIVER
ELIZABETH CITY	12/26/2012	WEDNESDAY	0455	FIRST AVE	0.0	1 PEDESTRIAN

### WARREN COUNTY

Municipality	Date	Day	Time	Road	MP	Persons Killed
KNOWLTON TWSP	01/14/2012	SATURDAY	1535	SH 94	1.0	1 DRIVER
WASHINGTON TWSP	05/08/2012	TUESDAY	1850	CR 623	1.2	1 DRIVER
POHATCONG TWSP	05/09/2012	WEDNESDAY	0501	SH 22	4.0	1 DRIVER
BELVIDERE TOWN	05/13/2012	SUNDAY	1625	MARKET ST	0.0	1 DRIVER
POHATCONG TWSP	06/14/2012	THURSDAY	0706	MOUNTAIN RD	0.0	1 DRIVER
LIBERTY TWSP	07/25/2012	WEDNESDAY	1049	SH 46	15.1	1 DRIVER
HACKETTSTOWN TOWN	08/01/2012	WEDNESDAY	0412	SH 182	0.9	1 PEDESTRIAN
HACKETTSTOWN TOWN	08/11/2012	SATURDAY	1623	SH 182	0.4	1 PASSENGER
ALLAMUCHY TWSP	10/03/2012	WEDNESDAY	1803	CR 517	20.5	1 PASSENGER
INDEPENDENCE TWSP	10/04/2012	THURSDAY	1653	SH 46	18.1	1 DRIVER
GREENWICH TWSP	10/19/2012	FRIDAY	0633	I-78	5.4	1 DRIVER, 1 PASSENGER
KNOWLTON TWSP	12/02/2012	SUNDAY	2120	I-80	5.3	1 PASSENGER

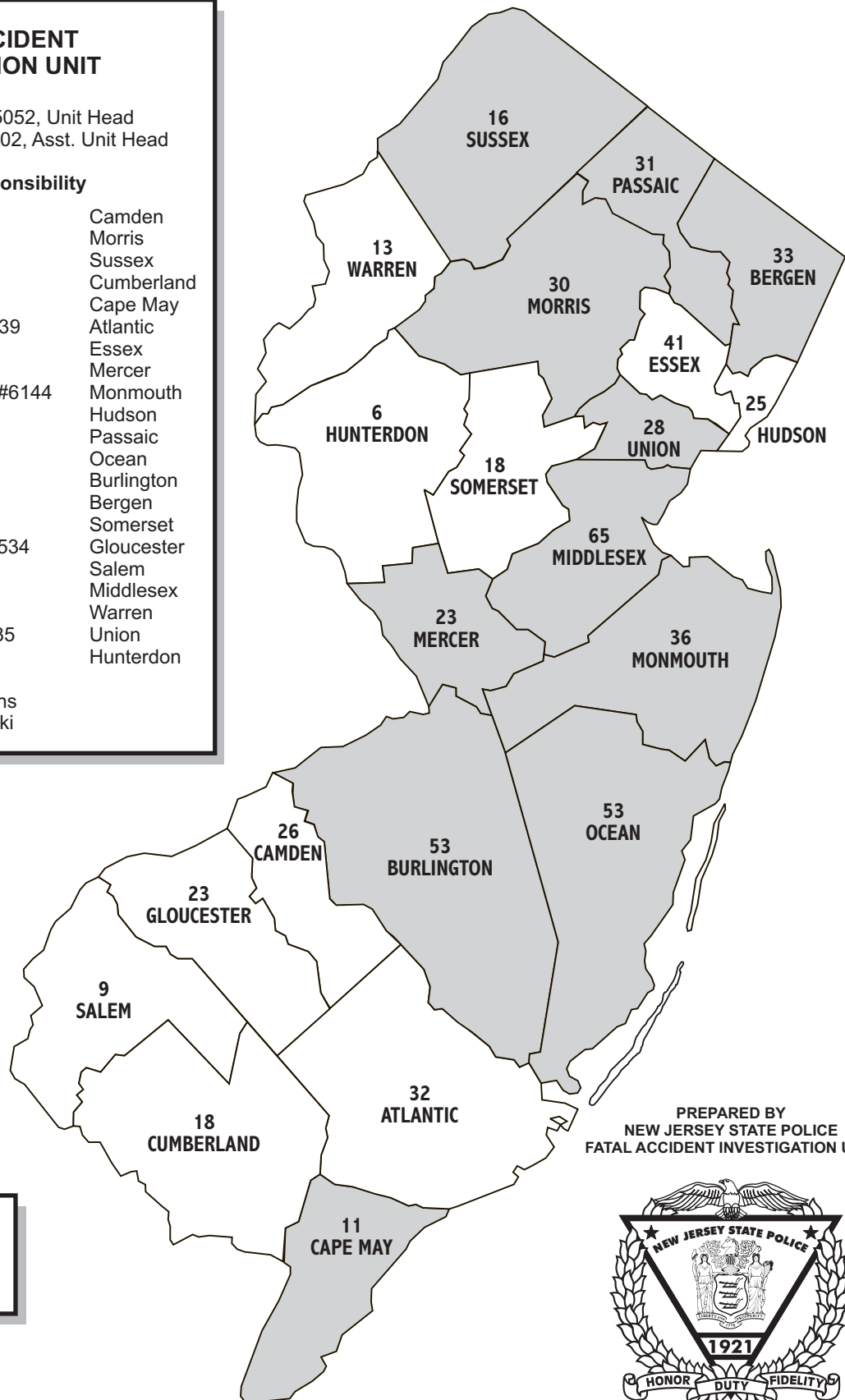
# FATALITIES BY COUNTY FOR 2012

## FATAL ACCIDENT INVESTIGATION UNIT

Lt. Robert Foulks #5052, Unit Head  
 DSFC Michael Rizol #5202, Asst. Unit Head

### Areas of Responsibility


DSG Richard Brunett #5127	Camden
DSG Robert Babitz #5332	Morris
	Sussex
DSG Paul Lokey #5475	Cumberland
	Cape May
DSG Matthew Razukas #5939	Atlantic
Det.I Kevin Bartels #5557	Essex
Det.I Patrick Brady #5951	Mercer
Det.I Gerrit Nieuwenhuizen #6144	Monmouth
Det.I Derek DiStaso #6186	Hudson
	Passaic
Det.II David Guinan #6266	Ocean
Det.II Edward Long #6305	Burlington
Det.II Daniel Oliveira #6419	Bergen
	Somerset
Det.II Michael Townsend #6534	Gloucester
	Salem
Det. Robert Nuber #6651	Middlesex
	Warren
Det. Matthew Kowalski #6735	Union
Det.II Kristin Welch #6358	Hunterdon
FARS Analyst Sandra Jenkins	
FARS Analyst Lisa Glodowski	



PREPARED BY  
 NEW JERSEY STATE POLICE  
 FATAL ACCIDENT INVESTIGATION UNIT



### LEGEND

Shaded Areas   
 Denote Increase from 2011.